

PARISH PLAN 2004-2009



INTRODUCTION

CONTENTS

<i>Environment</i>	2,3,4
<i>Employment</i>	5
<i>Health and Social Care</i>	6,7
<i>Education</i>	8,9
<i>Heritage</i>	10
<i>Housing Needs</i>	11-13
<i>Crime</i>	14-17
<i>Traffic & Transport</i>	18,19
<i>Sport & Leisure</i>	20,21
<i>Places of Worship</i>	22
<i>Parish Administration</i>	23,24
<i>Age and Gender</i>	25
<i>Verbatim Comments</i>	26-39
<i>Action Plan</i>	40,41



Children's Model of Middleton July 2003

What is the Middleton Parish Plan?

Parish Plans were announced in the Government's "Rural White Paper" in 2000. Through the Countryside Agency's Vital Villages initiative, parishes in rural areas were given priority and grants made available to cover the costs of preparation and production.

The purpose of the plan is to find out what the people of Middleton think about the issues affecting life in the village, find out if anything needs changing, create policy and take appropriate action where needed. This is a five year plan.

A substantial amount of feedback from the village "Future Needs" day in July 2003 helped to focus on the issues that concerned the majority of people. The Parish Plan Steering Committee was able to produce a questionnaire based on these issues, and therefore tailored to the needs and aspirations of Middleton.

The questionnaires were distributed by hand to the 301 people listed on the Corby Borough Council Register of Electors (CY Corby Rural West No.3). Glover Court was not included on the Register at the time, being still under construction, a questionnaire was offered to every occupant then present.

53% of questionnaires were returned, which helped to produce data of reasonable accuracy, although this is not a scientifically accurate survey, which would be beyond the resources and budget available.

Policy on how to deal with each of the issues contained in the plan flows from the feedback from the people of Middleton, as expressed at the open day, and the questionnaire. There are some issues that do not have a clear majority of views, and these need further discussion before policy is decided. In any event, the plan is not set in stone— a small community has the advan-

tage of being able to adapt and modify its policies if circumstances require it. The plan exists only to reflect the wishes of the people of Middleton, now and in future years.

Who has produced the plan?

Although initiated by Middleton Parish Council in early 2003, many people in the village have contributed substantial amounts of voluntary time and effort to the project.

The vital contributors of course are those people who aired their views, expressed opinions and made suggestions on the issues affecting the village. Without this involvement in our community, there could be no plan.

What happens now?

Middleton Parish Plan contains a number of policies that the community want implemented or continued. The Parish Plan and its associated Action Plan, represents an agreement between the community and the Parish Council as to how we would like our parish to develop now and in the future.

Like the Parish Plan itself, the Action Plan can be subject to review and revision. Priorities can change, and of course some objectives may not be met. The Parish Plan is not a guarantee, as many facets of local life are affected by policy decisions at Central, Regional, County and Borough levels. These authorities must, however, take Parish Plans into account when strategic, planning and other issues affecting the local community are being decided.

Will the plan have any real effect on our community?

If all or even some of the objectives in the plan are

achieved then clearly the village will be a better place to live. It is necessary to prioritise the Action Plan because some issues require more urgent action. High priority may not guarantee rapid action however, road safety in the village is an example. To bring about reductions in traffic speed through the village requires considerably more resources and cooperation by other authorities than say, tackling poor grass cutting.

Because the rural scene is changing, and priorities can shift, the Parish Plan needs to be dynamic and flexible. Policies and their associated plan of action need to be reviewed on a regular basis. The ongoing success of the project can only be assured if everyone in our community is involved.

Acknowledgments and Thanks

The people of Middleton for their participation in the open day and survey and the loan of historical photographs, maps and artefacts.

The Parish Plan Steering Committee : Kay Dickens, Tony Freeman, Charles Freestone, Maria Harvey, Mike Loseby, Dryden Phillipson (Chair).

Data Analysis : Dorothy Anderson, Derek Robertson, Gordon Watson.

The Head, Teachers and especially the children of Cottingham Primary school for their village model and fine photographs.

Jane Smith www.cottinghamhistory.co.uk.

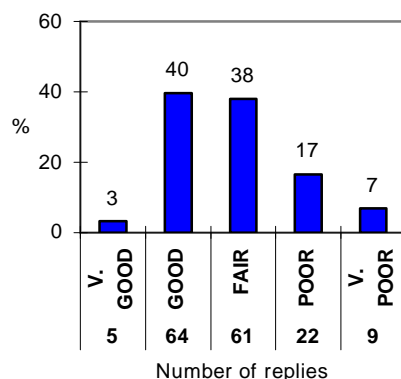
The Countryside Agency.

Northamptonshire Action With Communities in Rural England (NACRE).

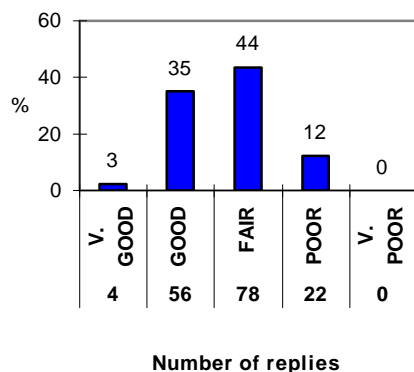
Middleton Parish Council Chaired consecutively by Simon Medwell and Keith Allsop

ENVIRONMENT

Q1 Standard of Street Cleaning (pavements?)



Q1 Standard of Street Cleaning (Roads/Verges)?



THE PRESENT SITUATION

The village of Middleton lies on the southern edge of the Welland valley. This rural area is blessed with a beautiful landscape ; the abundant trees and ancient hedgerows support a rich variety of wildlife.

Most people feel that Middleton is a good environment to live in. There are some issues causing concern however, including road maintenance, grass cutting, dog fouling, muddy and overgrown footpaths and bridleways.

Problems with pushchair access, height of kerbs and pavement obstructions have a serious effect on a relatively small percentage of people, and these problems must be given a high priority.

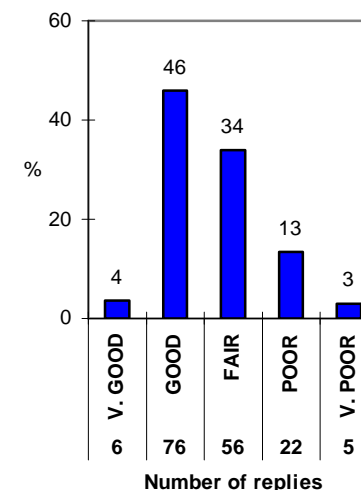
Increasing amounts of rainfall have had an impact on footpaths and bridleways, mud

being an almost year-long problem in some places. The footpath (Jurassic Way) from The Hill to East Carlton is particularly bad, at times hazardous, with mud and running water.

Fly-tipping is a problem on the old A427 and where Occupation Road joins Ashley Road. There is a high level of dissatisfaction with the slowness in clearing away the offending material.

The problem of pavements and verges fouled by dog mess is an issue that causes concern. There are many dogs in the village, and most owners take their responsibilities seriously. Regrettably, a small minority do not. Although appropriate local byelaws exist, an education and awareness programme is clearly needed to help address the problem.

Q1 Standard of Street Lighting?



Policy E1 : The Parish will make every effort to protect the natural environment in and around Middleton.

Policy E2: Where there is difficulty of access on pavements and roads in the village for push-chairs and wheel-chairs, priority will be given to resolving problems with the appro-

priate Borough and County authorities.

Policy E3 : The quality of maintenance of village footpaths and bridleways will be closely monitored. Feedback from regular inspections will be reported to the County Council Rights of Way Officer .

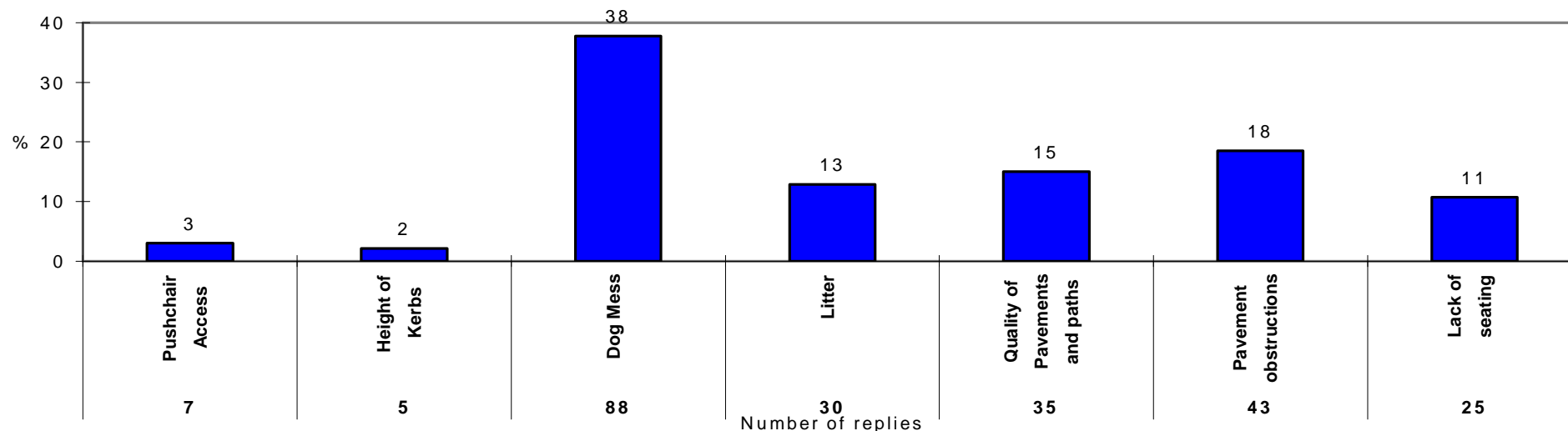
Policy E4: Fly tipping is abhorred by the par-

ish, and the appropriate authorities will be pressed to clean up without undue delay.

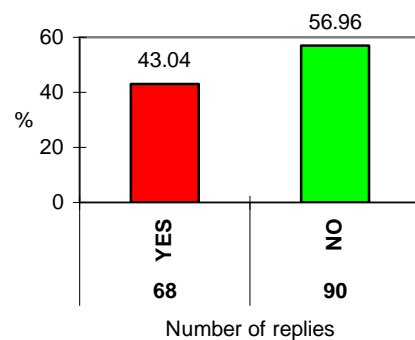
Policy E5: Dog fouling is unacceptable to the parish, persistent offenders against the relevant local byelaws will be reported to the appropriate authority.

ENVIRONMENT

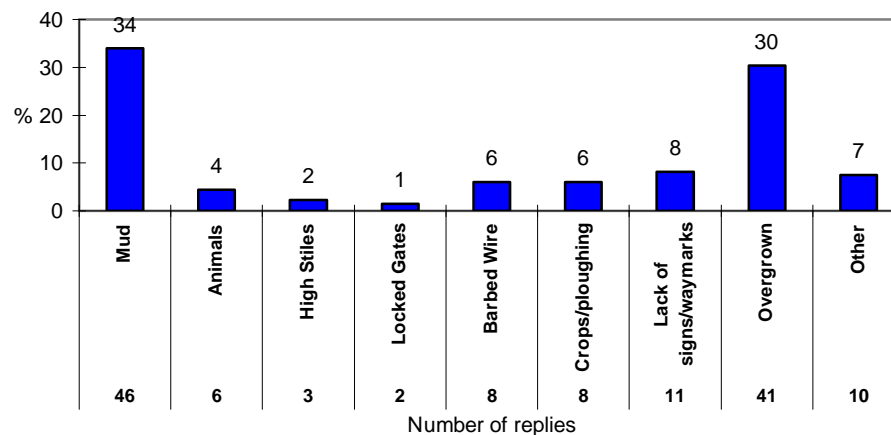
Q2 When walking in Middleton do you encounter problems with the following?



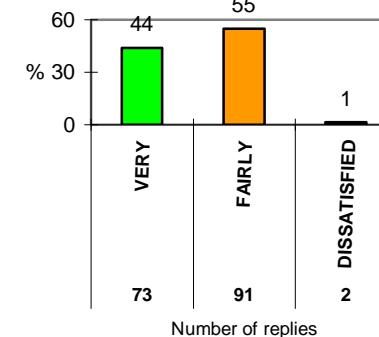
Q3 Have you experienced difficulties when using footpaths & bridleways around Middleton?



Q4 What problems encountered when using footpaths & Bridleways?

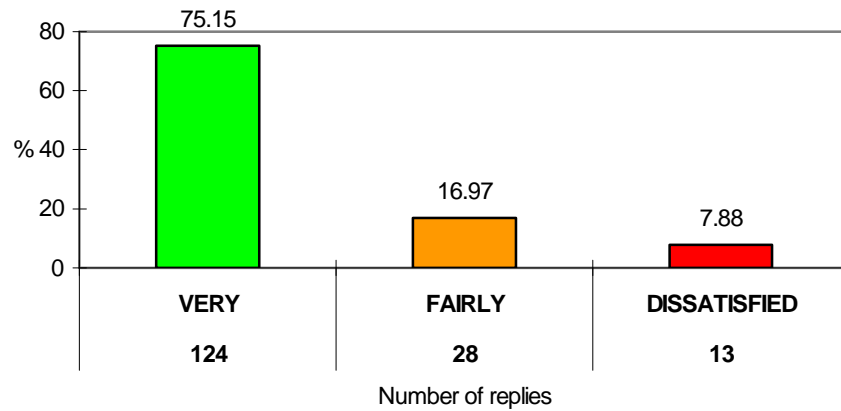


Q5 Satisfied are you with the "natural environment" around Middleton?

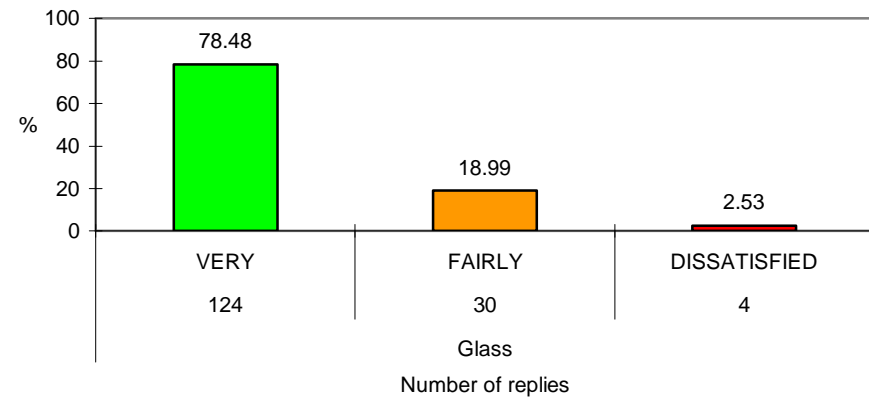


ENVIRONMENT

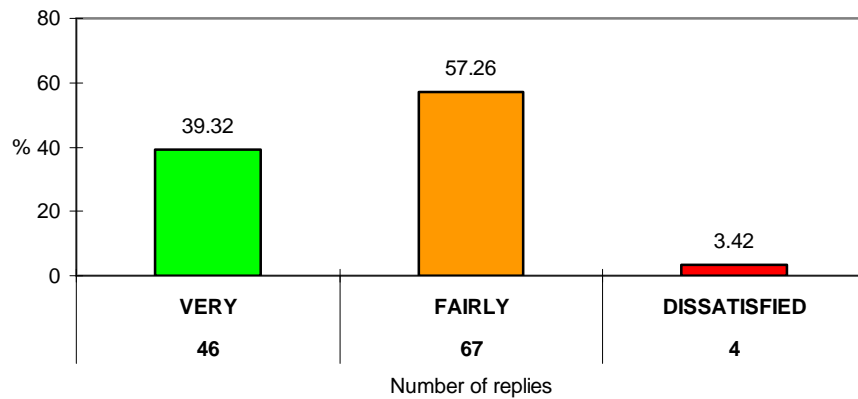
Q6 Satisfaction with weekly refuse collection



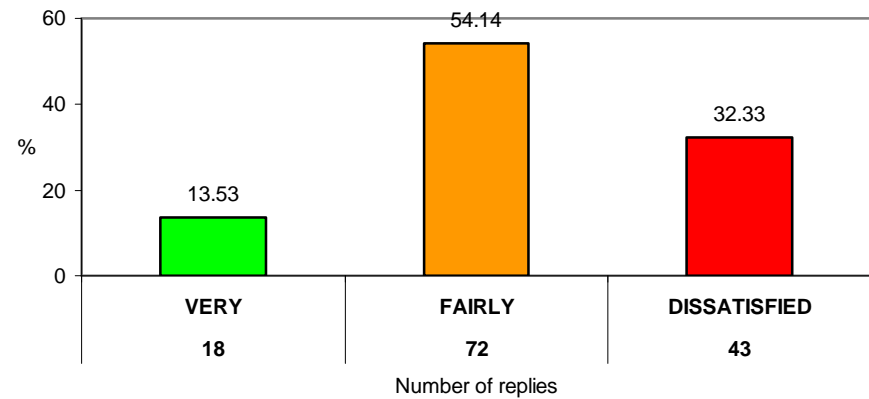
Q6 Satisfaction with weekly glass collection



Q6 Satisfaction with emptying of village waste bins

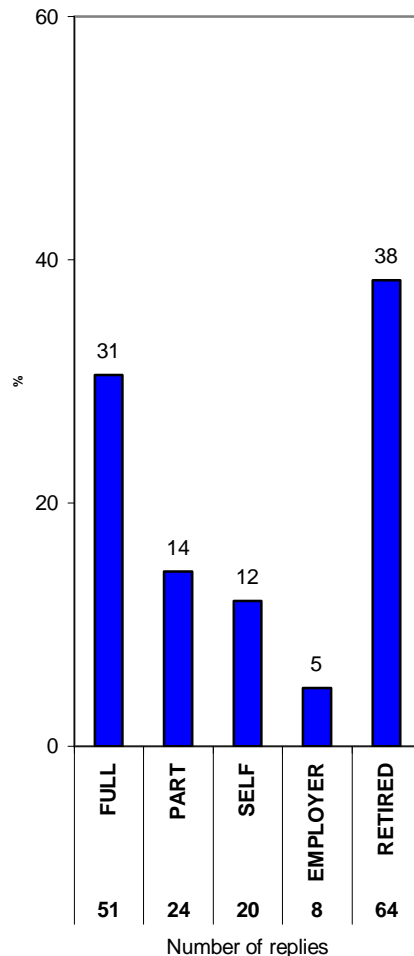


Q6 Satisfaction with clearance of fly-tipping



EMPLOYMENT

Q8 Type of Employment if any



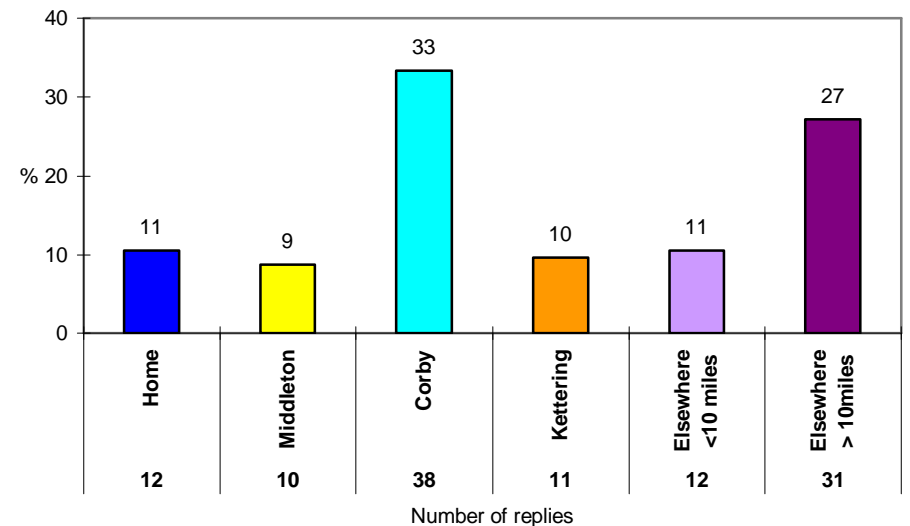
THE PRESENT SITUATION

Middleton does not presently offer significant employment opportunities. The majority of people working need to travel to Corby and further than 10 miles away.

The village survey shows that the number of people working from home in Middleton almost equal those working in Kettering or other locations within 10 miles of the village except Corby. Following a successful campaign and concerted "lobbying" of BT by a number of people in Middleton and Cottingham, Broadband communications facilities were introduced to the village within the past year. Broadband is seen as a major factor in the enabling of home-working for some people.

The largest single group of people who responded to the survey are retired.

Q9 Place of work



POLICY

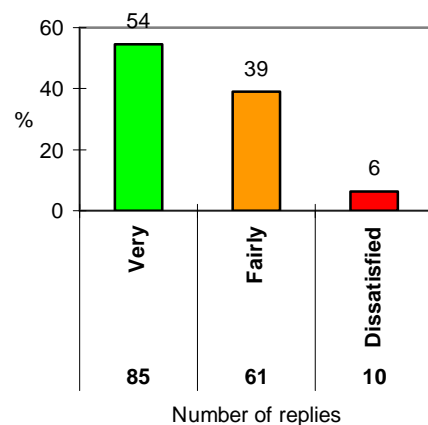
Policy EM1: The Parish recognizes the economic and environmental benefits of people being able to work locally and from home if they so choose. Support and encouragement will be given to advances in technology that make this possible. The Parish will encourage and support vocational training that may

increase the potential for local employment. The design for a new village hall should, within it's budget, make provision for adequate space and facilities to permit suitable evening classes and training sessions to be held if required.

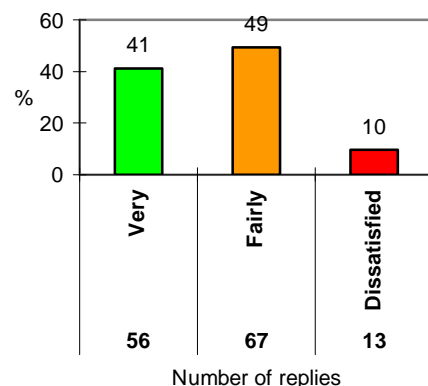


HEALTH AND SOCIAL CARE

Q11 Satisfaction with Local Doctor



Q11 Satisfaction with Local Hospital

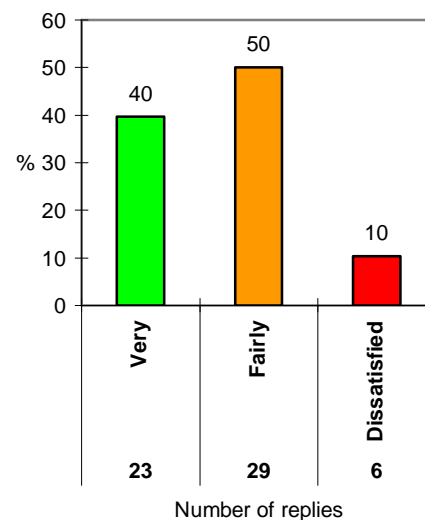


THE PRESENT SITUATION

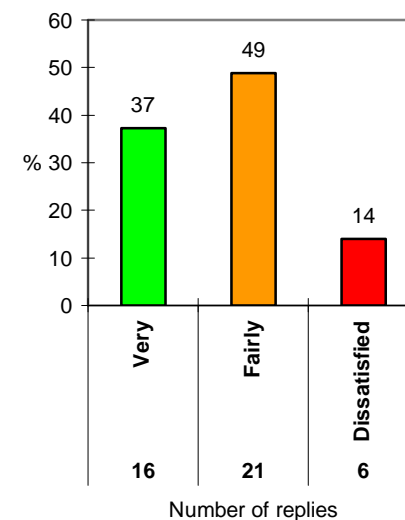
The great majority have no problems with local healthcare services, although the dissatisfaction with dentists and alternative therapies is quite significant. The single most common problem expressed is the difficulty in finding a local dentist offering NHS treatment.

A matter for concern is the number of people who have travel problems. Some of these problems are linked to the shortage of NHS dentists, forcing people to travel further for treatment. In general those people without independent transport are the most likely to have difficulties accessing healthcare services.

Q11 Satisfaction with local Physiotherapy



Q11 Satisfaction with local Chiropody



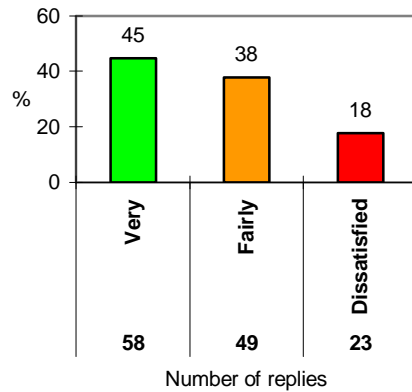
POLICY

Policy HC1: The Parish believes it vitally important to maintain a high quality of local healthcare services. These services must be accessible to all. Particular attention will be paid to those people with transport and other problems that may prevent or restrict access to the services. Wherever possible, the Parish will seek to have some healthcare services available within the village itself.

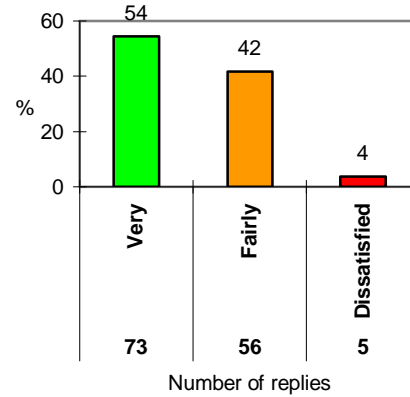


HEALTH AND SOCIAL CARE

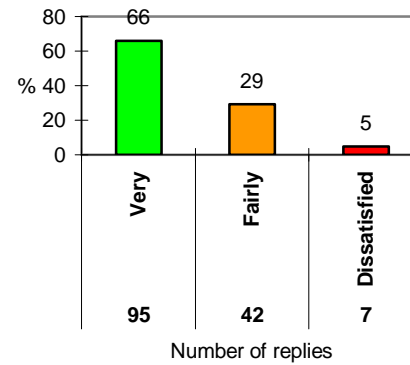
Q12 Satisfaction with Dentist



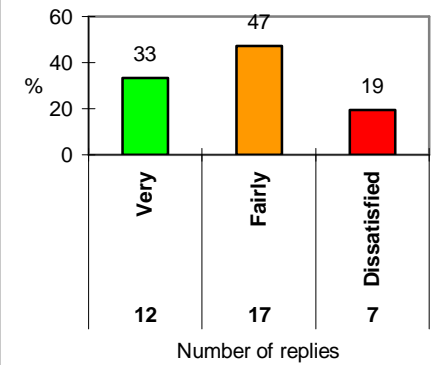
Q12 Satisfaction with Optician



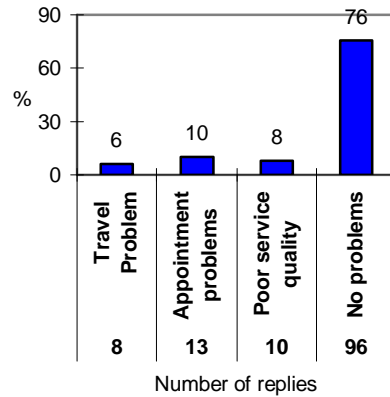
Q12 Satisfaction with Chemist/Pharmacy



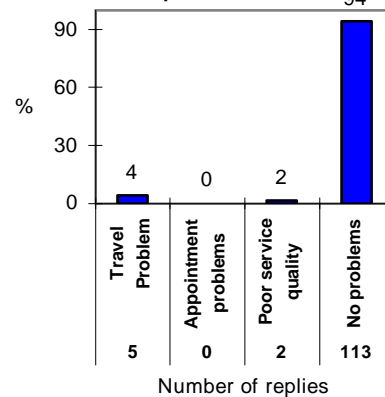
Q12 Satisfaction with Alternative Therapies



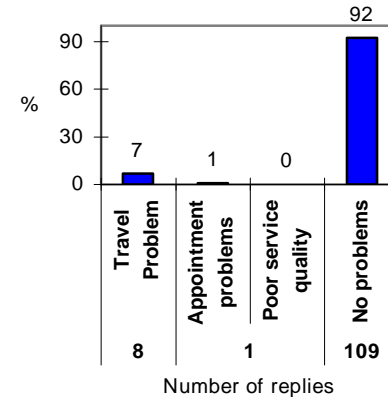
Q13 Nature of any problems - Dentist



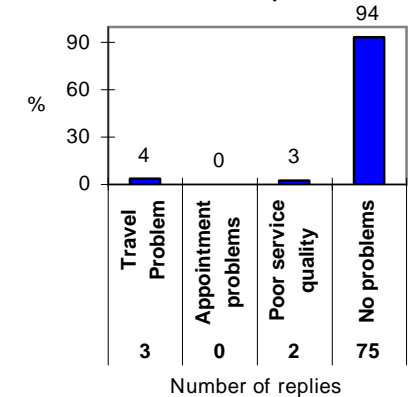
Q13 Nature of any problems - Optician



Q13 Nature of any problems - Chemist/Pharmacist

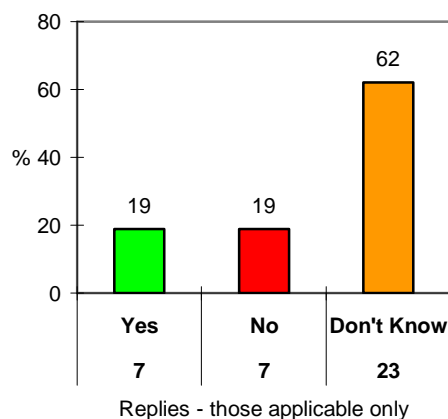


Q13 Nature of any problems - Alternative Therapies

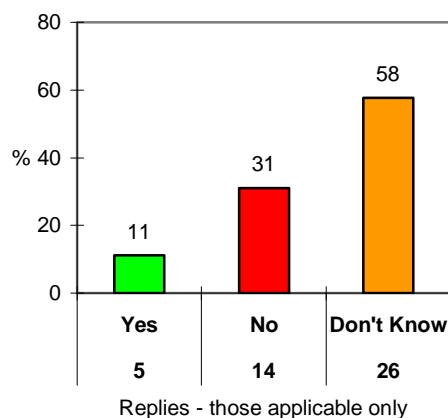


EDUCATION

Q15 Enough Childminders?



Q15 Enough After-school clubs?



THE PRESENT SITUATION

Satisfaction with the standard of local primary and secondary education is quite high. Cottingham Church of England Primary School scored a high satisfaction rating. Despite providing for a number of nearby villages and the recent growth in the population of Middleton, there appears to be no real pressure on the capacity of the local primary school at present. Indeed, in 2004 there is a slight fall in the roll.

By comparison, local secondary schools received somewhat lower ratings, but over 85% of respondents felt they were very good or acceptable.

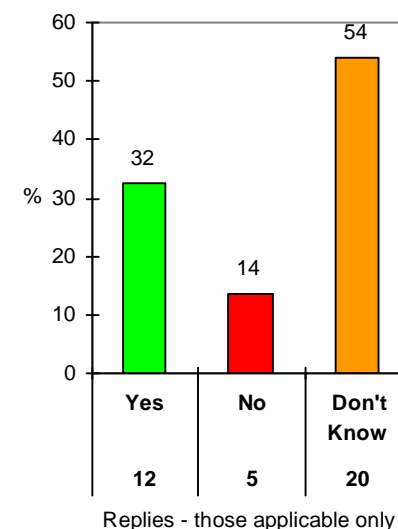
At least half of those replying to the survey felt there were insufficient Childminders, After-School Clubs, Holiday Clubs, Day Nurseries and Parent and Toddler Groups in the village. The majority felt that there were enough Pre-school Playgroups.

It is possible that the introduction of new privately run facilities in Middleton in September 2004 may help resolve some of the problems in this area.

Cottingham Church of England Primary School



Q15 Enough Pre-school playgroups?



POLICY

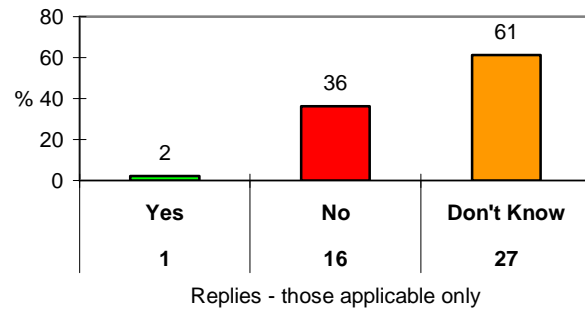
Policy ED1 The Parish places a high priority on the availability locally of high quality primary and secondary education for children of all ages. The quality and availability will be monitored, and the responsible authorities will be made aware of any concerns arising. Adequate nursery, Pre and After-School,

Childminding and similar facilities are regarded by the Parish as important. It is recognized that these facilities both aid the development of young children, as well as enabling parents to meet their commitments to work, study and family as the case may be.

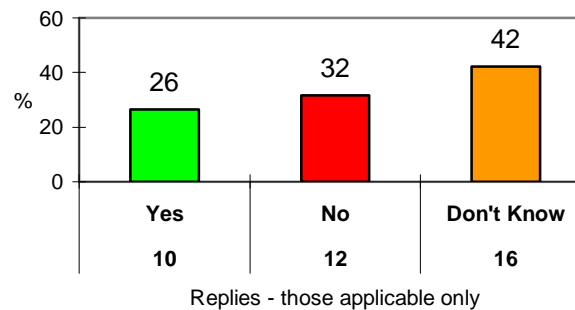
Every effort will be made by the Parish to encourage the development of these facilities in the future.

EDUCATION

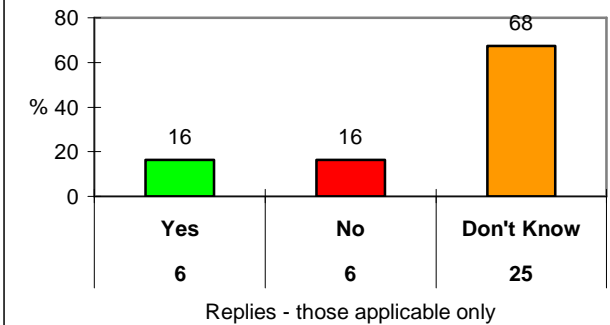
Q15 Enough Holiday clubs?



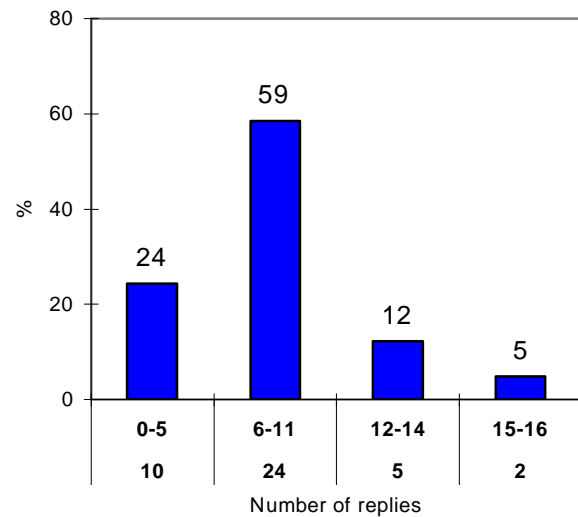
Q15 Enough day nurseries?



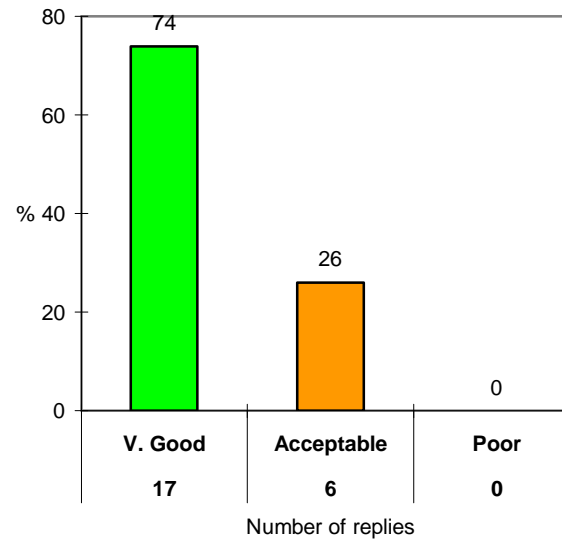
Q15 Enough parent and toddler groups?



Q16 Age of Children



Q17 Local infant Primary Rating - attendees

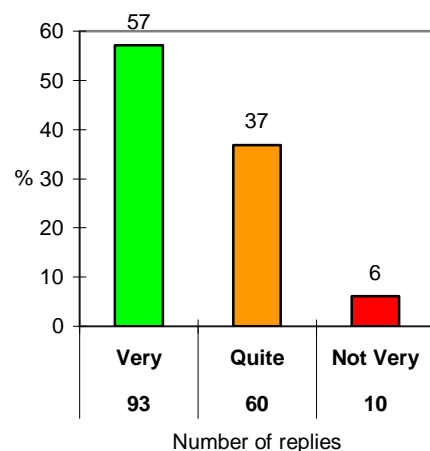


Q17 Local secondary Rating -Attendees



MIDDLETON'S HERITAGE

Q19 How interested are you in Middleton's heritage being preserved?



Former Middleton Chapel built 1844

THE PAST AND PRESENT SITUATION

There is evidence that Middleton was a community as long ago as 1197, although it does not appear in the Domesday book of 1085, as do its neighbours East Carlton and Cottingham. This position, nestling between two villages probably gave Middleton its name, meaning "middle farm".

The three villages are inextricably linked in terms of their history, yet each has evolved with a unique identity.

Many things qualify as being part of our local heritage. Buildings, structures, ancient tracks and hedgerows are obvious ones, but local customs and traditions also form part of our heritage.

At the Parish Plan Open Day, there was a great deal of interest in the early photographs and documents on display. These were kindly loaned by local residents of both Middleton and Cottingham.

A potted early history -

Roman Remains found during construction of Bury Close in 1960's, close to site of Via Devana Roman road.

1146 During Second Crusade, Middleton mentioned by Pope Eugenius in connection with Abbey of Peterborough.

1197 Feet of Fines (recording conveyance of freehold property) mentions Middleton in .

1541 Peterborough Abbey re-constituted as a Cathedral, loses Cottingham and hamlet of Middleton to Crown (Henry V111).

1572 Elizabeth 1 grants Middleton Thicke and other local coppices to Christopher Hatton.

1671 Possible origin of local Copyholders,

who still exist in Middleton and Cottingham

1777 Time of relative prosperity for the rural community of Cottingham-cum-Middleton strong local woollen industry with more weavers than agricultural workers.

1766 Copyholders, as Lords of the Manor contribute to cost of School and Schoolmasters house Camsdale Walk.

1796 Declining local prosperity sees "Poor House" built on the site now occupied by the Rockingham Forest Wheelers Club.

1885 Kelly's lists Mrs Hannah Major, Mrs Elizabeth Rayson and Mr John Dexter as Landladies/Landlord of Red Lion, Woolpack and Exeter Arms Public Houses all in Middleton.

POLICY

Policy H1: The Parish values its heritage and will make every effort to protect and preserve it. Any future development in or around the village that may threaten the heritage of Middleton will be resisted.



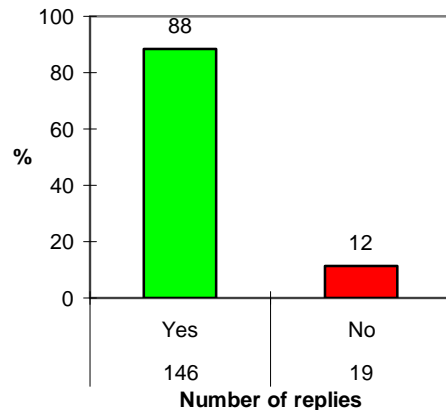
Old School and School-Masters house Camsdale Walk

Fete at Middleton Village Hall Ashley Road

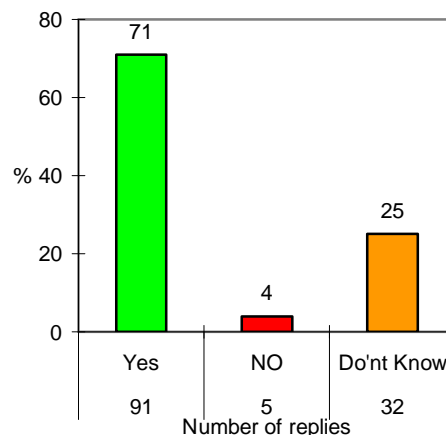


HOUSING NEEDS

Q21 current accomodation suitable over the next few years?



Q23 If your future housing needs can be met, would you stay in Middleton?



THE PRESENT SITUATION

Typical of many villages, Middleton has a wide variety of types and sizes of dwellings, from large family homes to small terraced cottages.

The large majority of people living in the village feel that their present accommodation will suit their needs for the next few years at least.

Clearly indicated by the survey is the opposition to the development of groups of dwellings, of flats and apartments, and expansion of the edge of Middleton.

Almost 92% state that no family member had left Middleton because of a lack of affordable

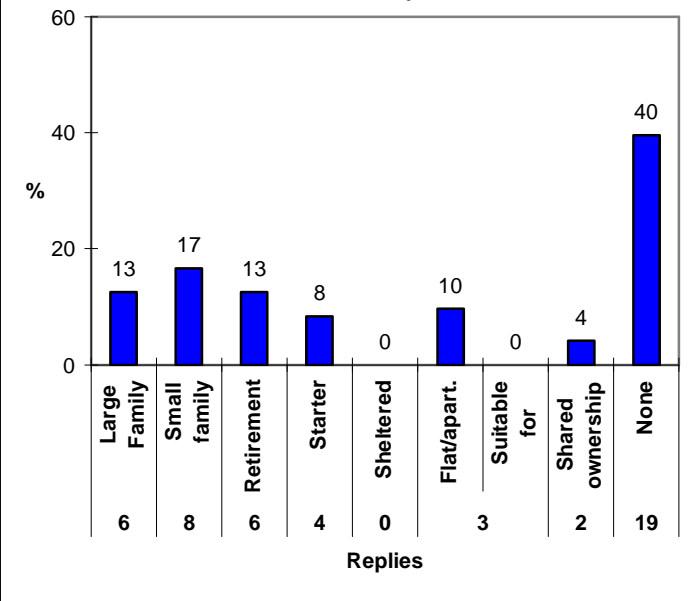
housing.

Views on the beneficial versus detrimental effect of past housing developments is equally split. The majority feel that not much impact has been made on the village.

The survey results present an overall view that the housing now available in Middleton is adequate in quantity and type to meet the needs of residents for some years to come.

The "Time lived in Middleton" responses indicate a relatively stable community, with over 69% being resident for over 6 years. The addition of over 25 new houses during 2004 will have an impact on these statistics.

Q22 If you answered no to Q21, what kind of accomodation would you seek?



POLICY

Policy H01: The Parish believes that the quantity and mix of dwellings now available in Middleton is sufficient for present and future needs.

The Parish believes that further large scale housing development in or around the village

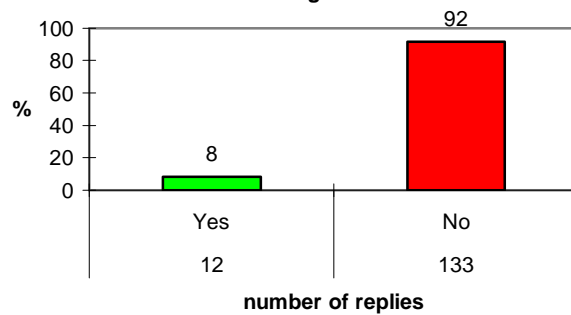
is not required for local needs and could not be supported by local services, transport and employment opportunities.

Any proposals for local developments that conflict with the majority views of the Parish will be resisted on these grounds.

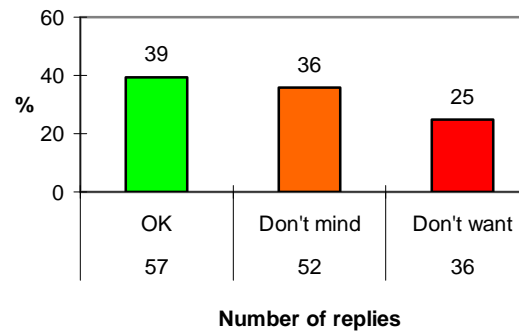


HOUSING NEEDS

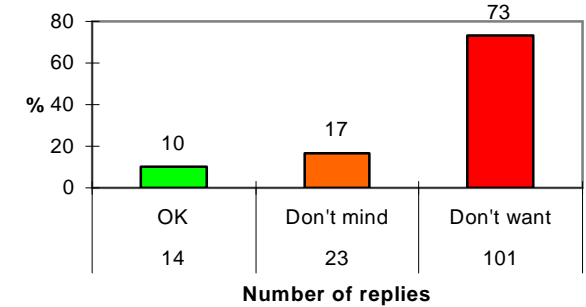
Q24 Has any family member left Middleton in the last five years through lack of affordable housing?



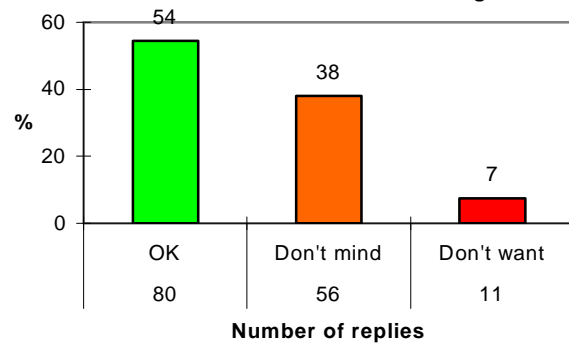
Q25 Housing developments for Middleton - Single dwellings?



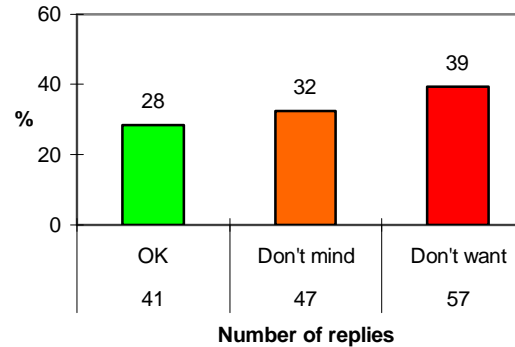
Q25 Carefully designed larger groups of dwellings?



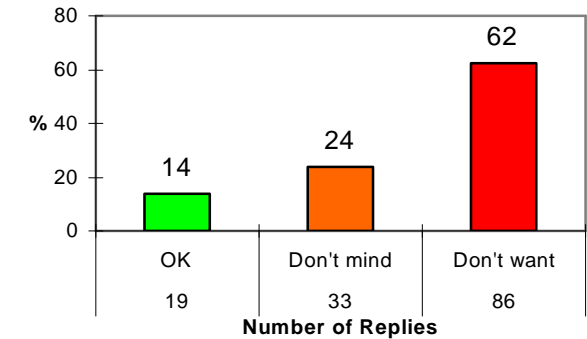
Q25 Conversion of redundant buildings?



Q25 Small groups less than 10 dwellings?

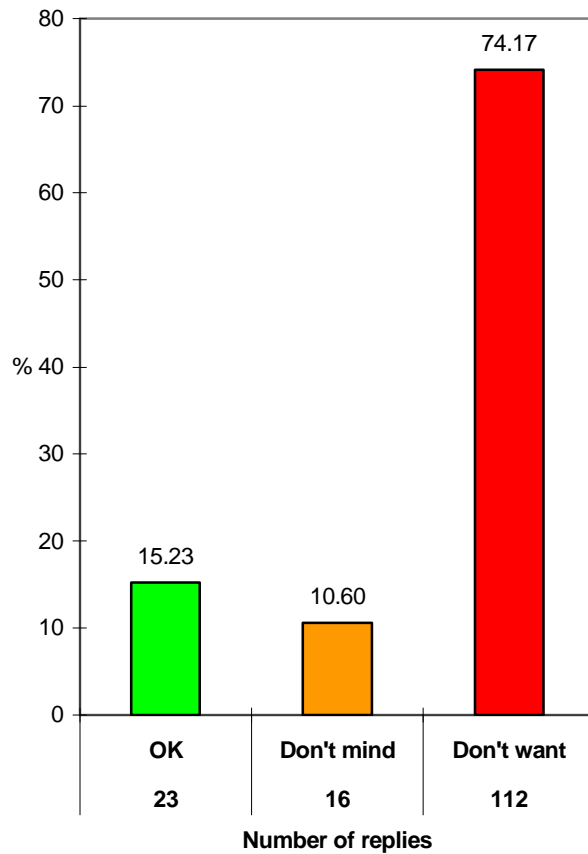


Q25 Housing developments for Middleton - Flats and Apartments?

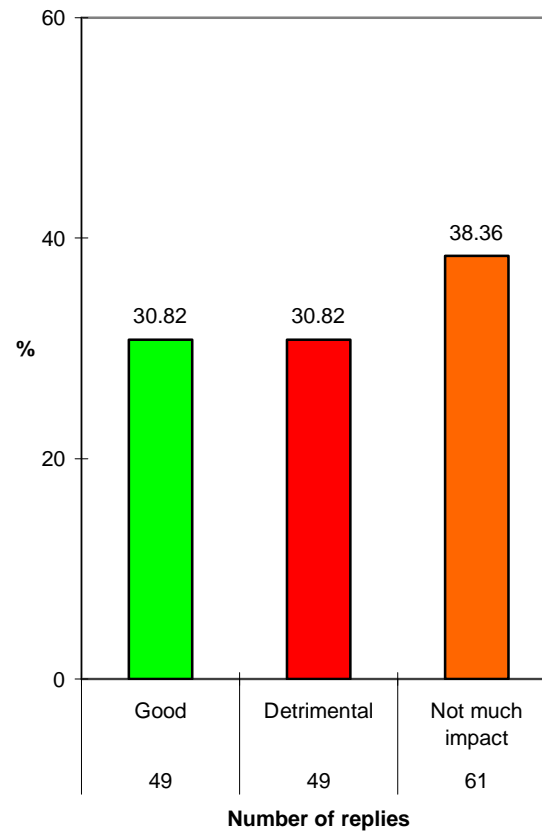


HOUSING NEEDS

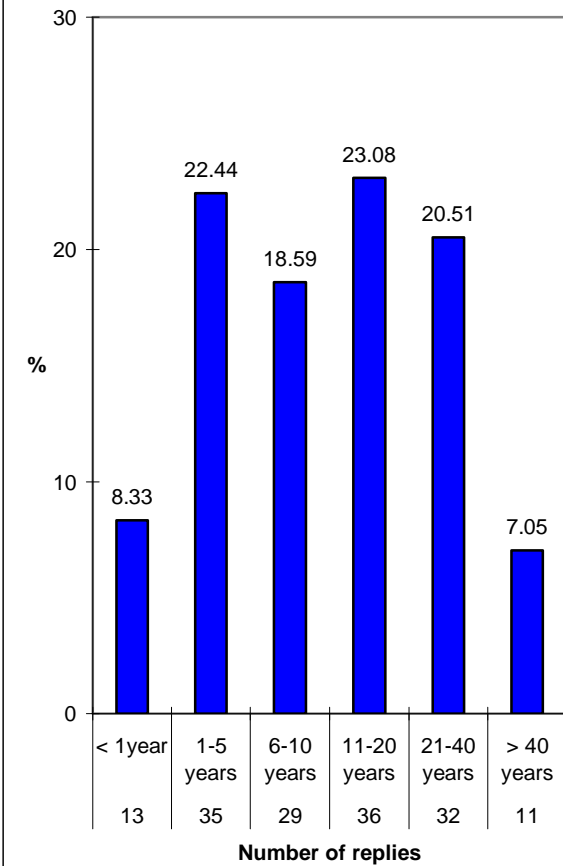
Q25 Expansion of the edge of the village?



Q26 Effect of new housing developments in Middleton over past 5 years?

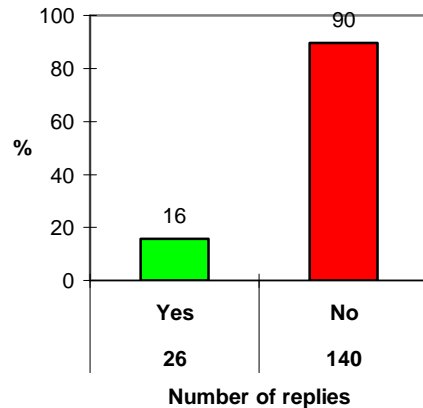


Q27 How long have you lived in Middleton?



CRIME & ANTI-SOCIAL BEHAVIOUR

Q29 Do you know who your village policemen is?



THE PRESENT SITUATION

Middleton does not suffer from significant levels of crime, but almost half of those questioned are worried about crime in the village. Fear of burglary, vehicle related crime, vandalism and safety of children all rank approximately equally. Fear of assault and drug related crime is less evident.

The survey reveals a high level of dissatisfaction with the local police service. This negative view of the local police appears to be held by both actual victims of crimes as well as those who have not suffered from a crime.

The most common types of crime suffered are vandalism (21 people) and theft from a motor vehicle (17 people).

Whilst the large majority of people in Middleton are not affected, 27 people reported that anti-social behaviour affected their

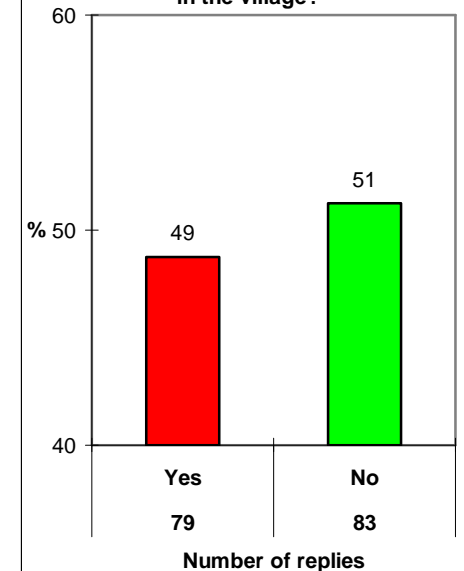
quality of life, 4 very seriously.

Whilst crimes can be categorized, anti-social behaviour can be a subjective issue.

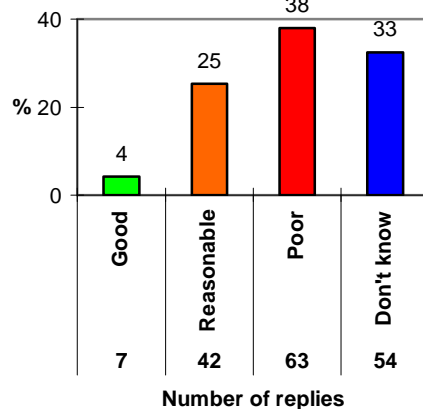
Comments on the subject show that noise of some kind is the main reason for complaint, with fireworks being the chief culprit. Traffic speeding and dangerous parking related complaints are next, and in descending order of complaints, others include dog fouling, noisy children, taxi horns, drunkenness, and light pollution.

The Crime and Disorder Act of 1998 made it a statutory responsibility for Borough Councils to create a Community Safety Strategy. The Corby Borough 2002-2005 strategy is intended to introduce measures to reduce the opportunities for crime and anti-social behaviour, and to tackle their root causes. Parish Councils also have a responsibility to do all they can to prevent crime and disorder in their area.

Q31 Are you worried about crime in the village?



Q30 Service provided by the local police?



POLICY

Policy CD1: The Parish wishes to see a much increased presence and improved level of service from the local police. An improvement in communications will be sought with the police officer allocated to Middleton, and a request will be made for regular meetings where residents may express any concerns

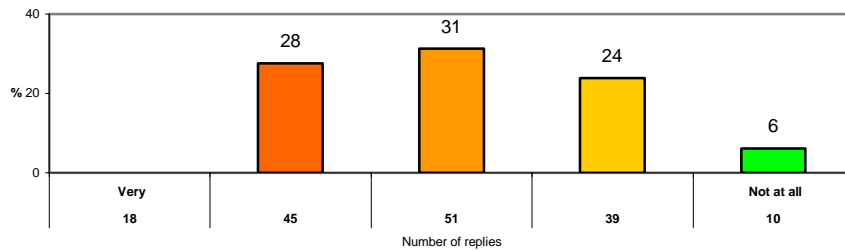
about local crime and anti-social behaviour.

Policy CD2: The Parish will not tolerate anti-social behaviour that adversely affects the quality of life in the community. As the responsible local authority, Middleton Parish

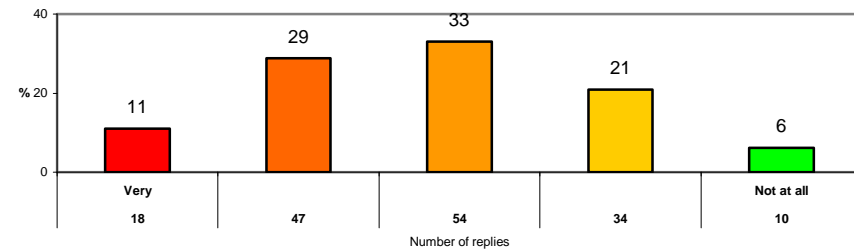
Council will be expected to provide opportunities for complaints to be heard and if required, formally referred to the appropriate authorities for action.

CRIME & ANTI-SOCIAL BEHAVIOUR

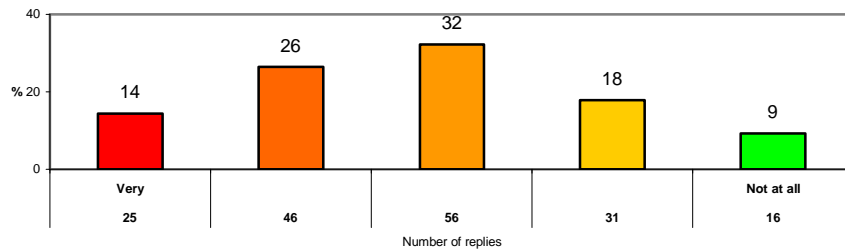
Q 32 How worried about burglary?



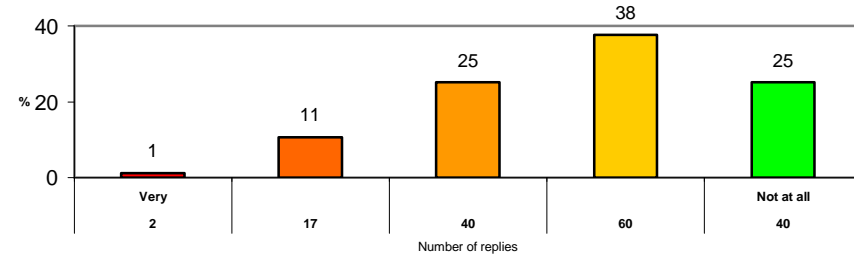
Q32 How worried about vehicle related crime?



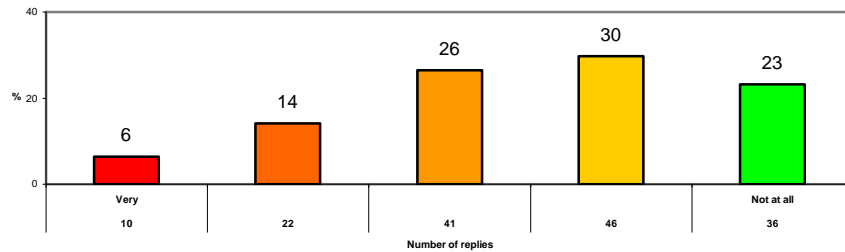
Q32 How worried about vandalism?



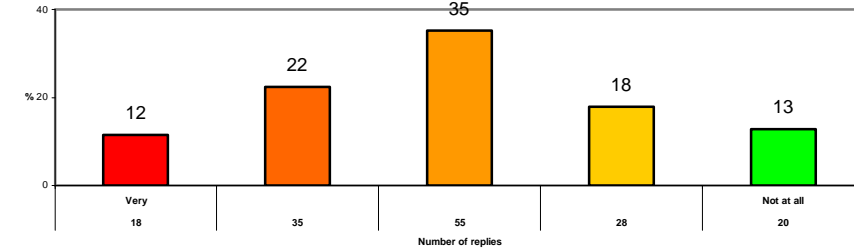
Q32 How worried about assault



Q32 How worried about drugs related crime

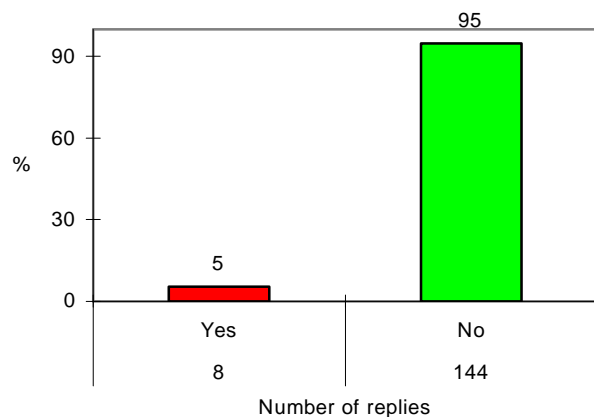


Q32 How worried about the safety of children in the village

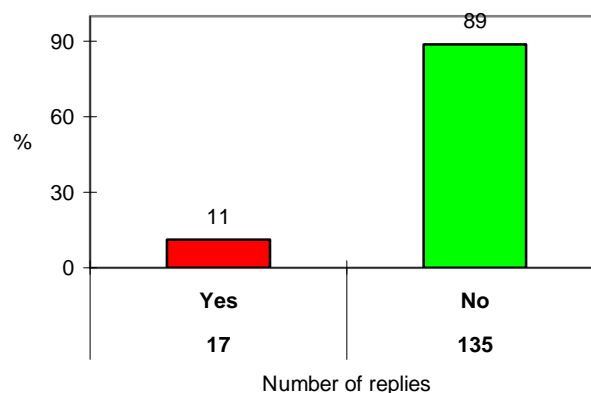


CRIME & ANTI-SOCIAL BEHAVIOUR

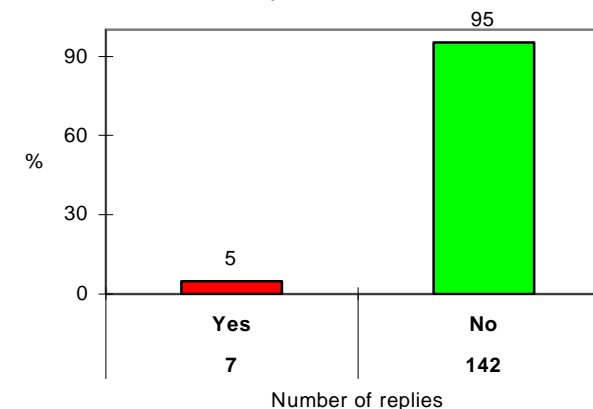
Q33 Suffered Burglary in village in last 5 years?



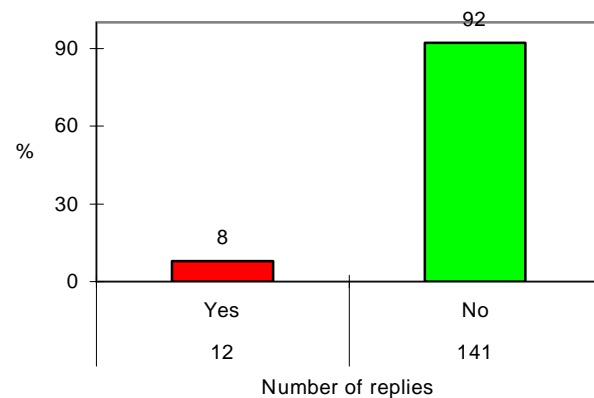
Q33 Suffered theft FROM vehicle in village in last 5 years?



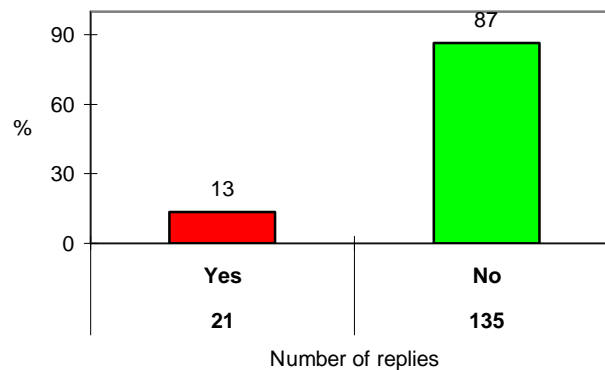
Q33 Suffered theft OF a motor vehicle in last 5 years?



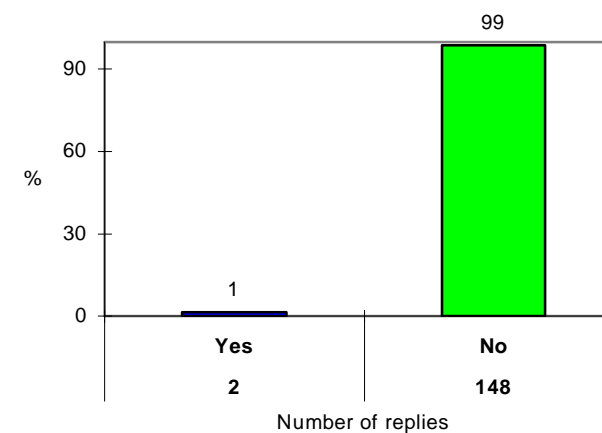
Q33 Suffered other theft in village in last 5 years?



Q33 Suffered from vandalism in village in last 5 years?

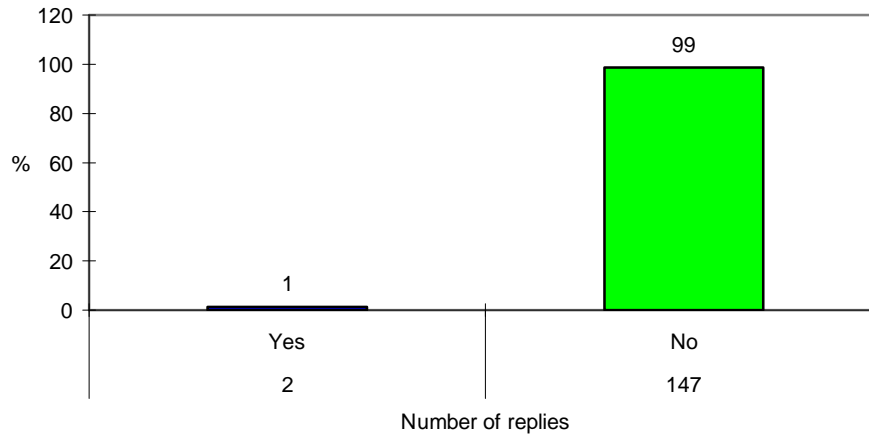


Q33 Suffered assault in village in last 5 years?

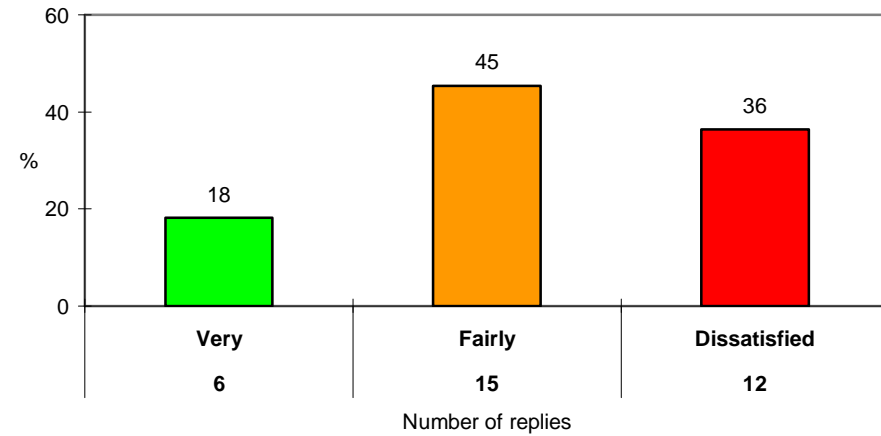


CRIME & ANTI-SOCIAL BEHAVIOUR

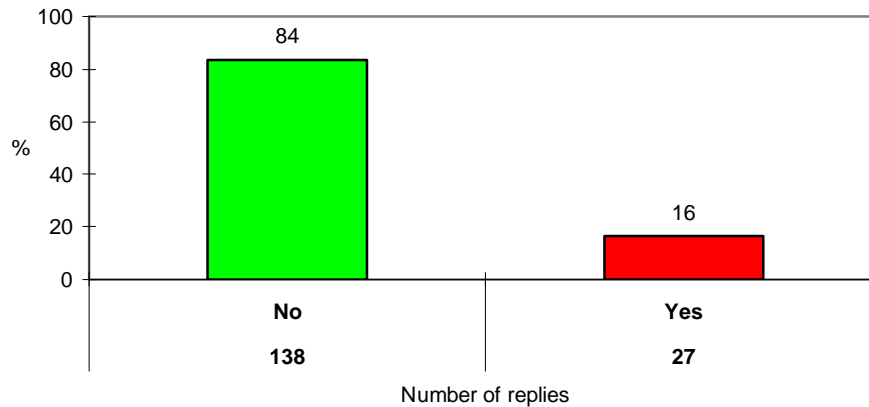
Q33 Suffered drugs related crime in village in last 5 years?



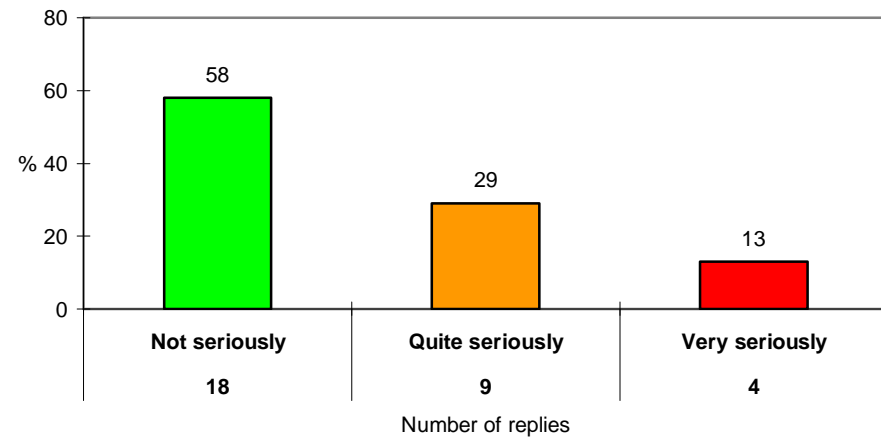
Q 34 Level of satisfaction of police handling incident?



Q35 Is your quality of life affected by anti-social behaviour within village?

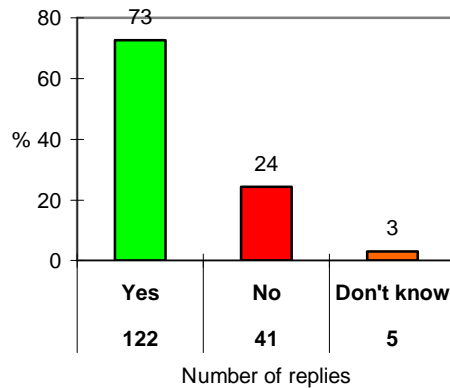


Q36 How seriously affected by anti social behaviour in village?

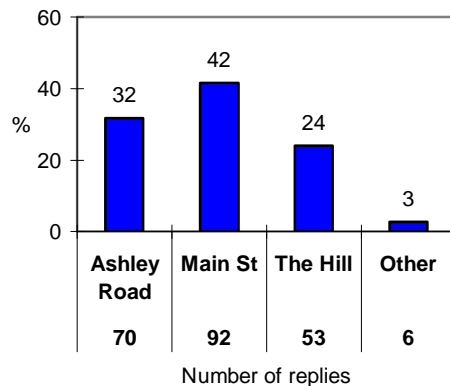


TRAFFIC AND TRANSPORT

Q39 Do you think traffic calming is needed in Middleton?



Q40 Choose where would you like to see traffic calming



THE PRESENT SITUATION

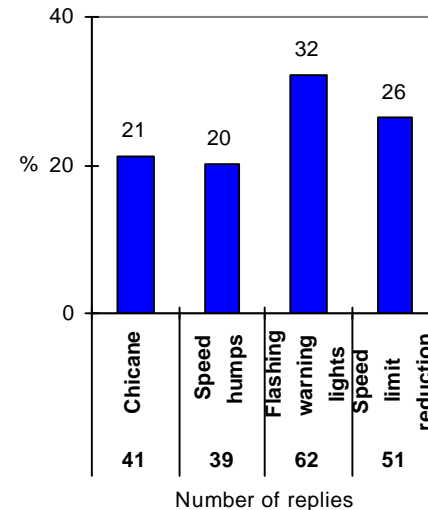
Middleton is located about a mile away from the nearest major road, the A427. Most traffic through the village is local or associated with nearby villages.

Excessive speed of some traffic in Ashley Road, The Hill and Main Street causes serious concern to many people in the village. Feedback from the village open day indicates that this issue is high on the list of serious concerns, particularly in connection with the safety of children.

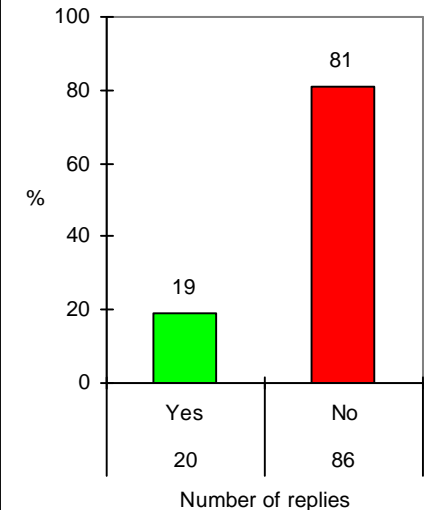
The Hill and Ashley Road provide fast approach opportunities for motorists entering the village. Main Street is narrow, with cars necessarily parked on the road, making excessive speed very dangerous.

Although most people are not interested in car sharing, there are sufficient numbers to make such a scheme viable.

Q41 What type of traffic calming favoured?



Q43 Interest in car share scheme?



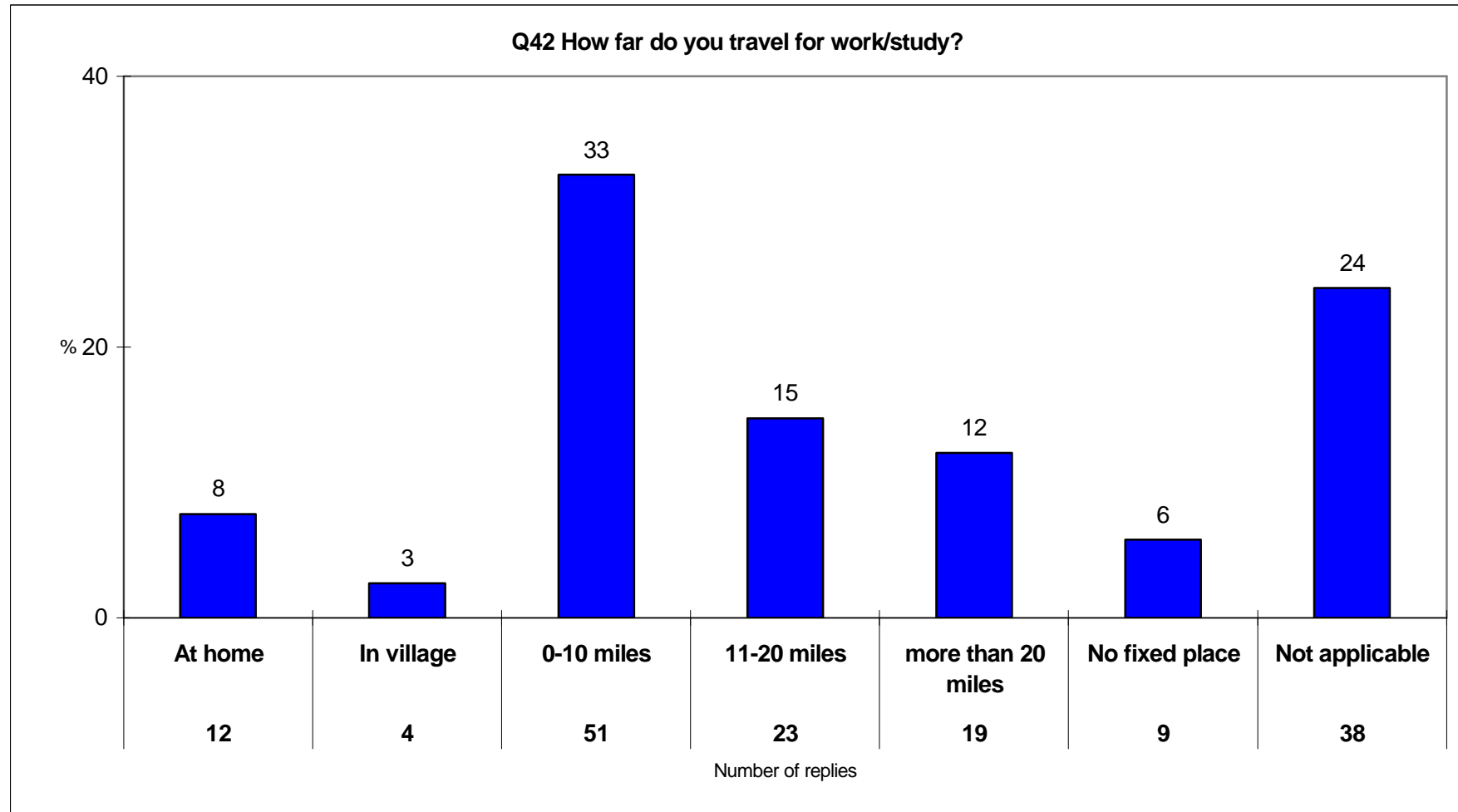
POLICY

Policy T1: The potential danger caused by speeding traffic in any part of the village is viewed with serious concern by the Parish. Every effort will be made to put continued pressure on the appropriate authorities to introduce traffic calming in every part of the village affected.

Policy T2: The Parish recognizes the environmental and economic benefits of car sharing schemes. Every effort will be made to create and promote such schemes.



TRAFFIC AND TRANSPORT



SPORT AND LEISURE

THE PRESENT SITUATION

“Your Middleton” Parish Plan day 2003



Sports Field



There are currently little or no leisure facilities within Middleton, or in neighbouring villages. Since the old Ashley Road village hall burnt down some years ago, the annexe of the local infant primary school has been the only available venue. Although useful, this has not been suitable for many of the activities typically needed in a modern village.

The village survey indicates that there is a strong case for a hall that can cater for a wide variety of uses.

The village has secured a small but adequate site for a hall or meeting room, along with limited funding, as a result of the recent Glover Court development. In May 2004, Middleton Parish Council obtained planning permission for the construction of a village hall or meeting room.

In 2004, the football field and changing facilities

fell into disuse because the prohibitive costs of Football Association rules for the pitch could not be met by the football club.



Rockingham Forest Wheelers Club

POLICY

Policy SL1 : The Parish recognizes the importance of having a suitable open space close to the village for sports and leisure activities. Every effort will be made to preserve the sports field and encourage its use.

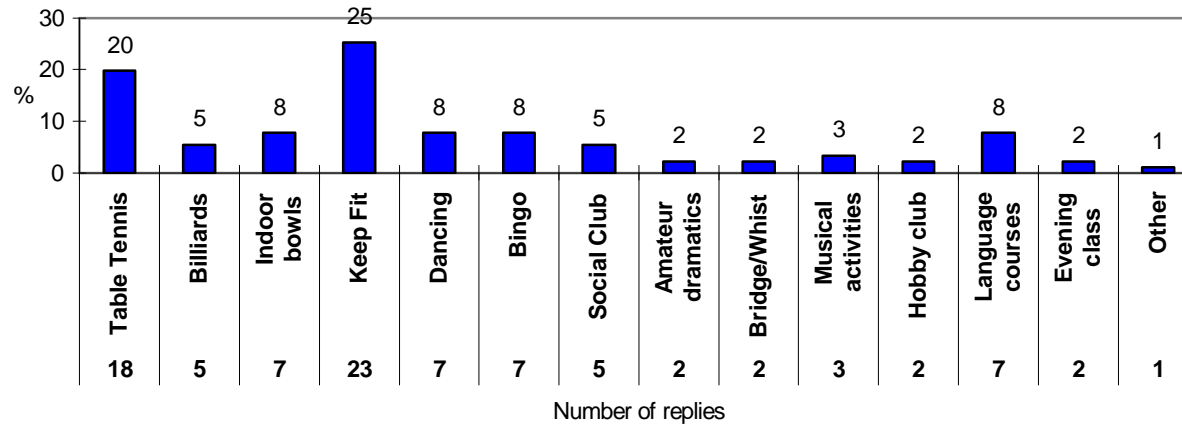
Policy SL2: A Village hall or Meeting Room is seen by the Parish as a valuable community focal point, providing opportunities, that may not otherwise exist, for bringing people of the village together.

When this facility becomes available, every

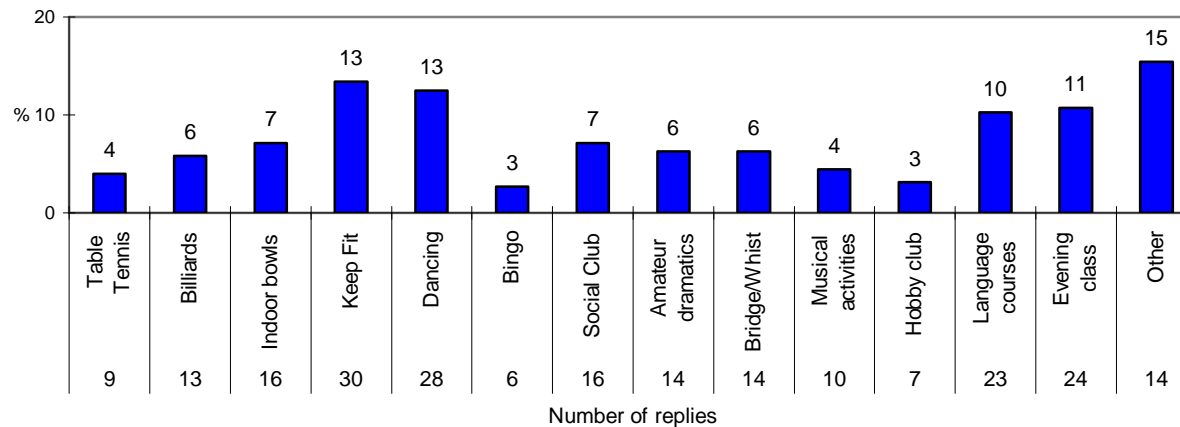
effort will be made to promote its use for the enhancement of a strong community spirit within Middleton and also with neighbouring villages, who will be welcome to share the facilities available.

SPORT AND LEISURE

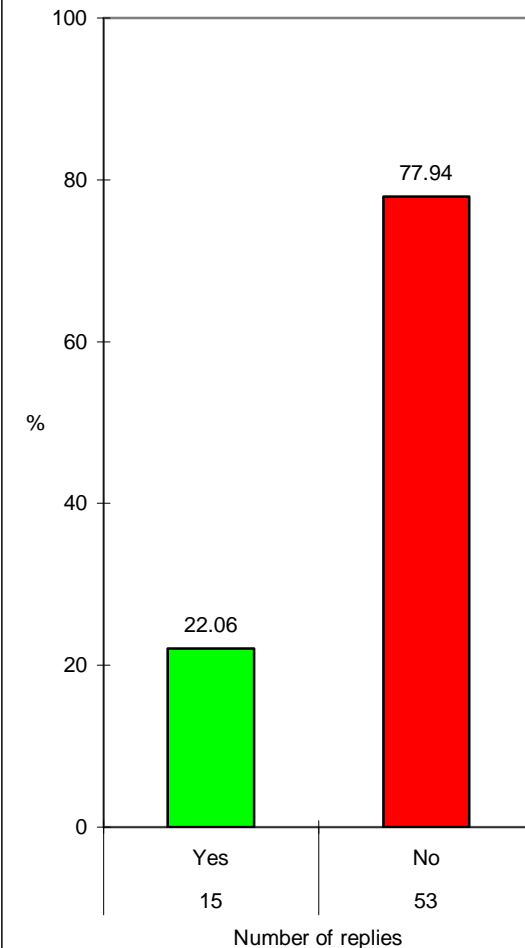
Q45 Interest in activities in new village hall - Daytime



Q45 Interest in activities in new village hall - Evening

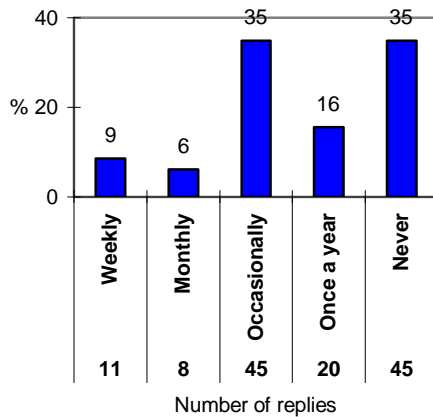


Q46 Participate or support any other village activities?

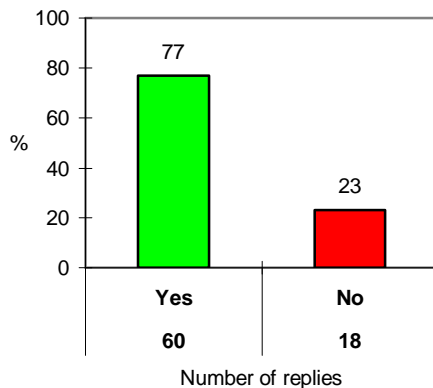


PLACES OF WORSHIP

Q49 Attend Place of Worship?

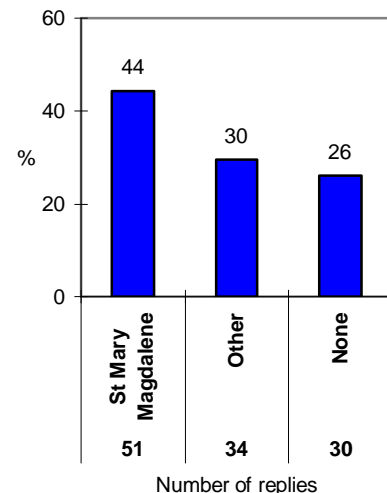


Q51 Personal and parish needs met by your Place of Worship?



THE PRESENT SITUATION

Q50 Which Place of Worship used?



The Survey indicates that the needs of the individual and of the parish are, in the main, being met by the Places of Worship attended.

The majority of those who responded do attend a Place of Worship at some time.

Since the closure of Middleton Congregational Chapel in the 1960's, St Mary Magdalene Church and the Methodist Chapel are the only local Places of Worship for the neighbouring villages of Middleton and Cottingham.

13th century St Mary's church is in need of substantial external and internal restoration. An active group of supporters within both villages has made concerted efforts to raise some £80,000 to fund both the restoration work and to repair damage caused by serious vandalism in 2002.



St Mary Magdalene Church

POLICY

Policy W1: The Parish recognizes that well supported and active local Places of Worship are important for the spiritual and social needs of many people in our community. The Parish will encourage and support those involved in the activities of our local church, chapel and other local Places of Worship.



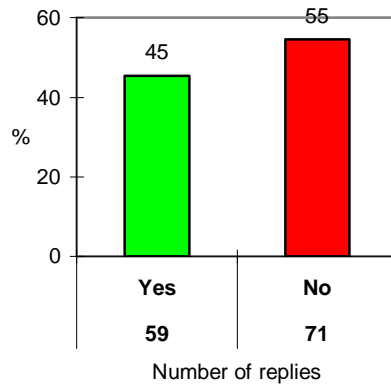
Cottingham Methodist Chapel

Former Middleton Chapel

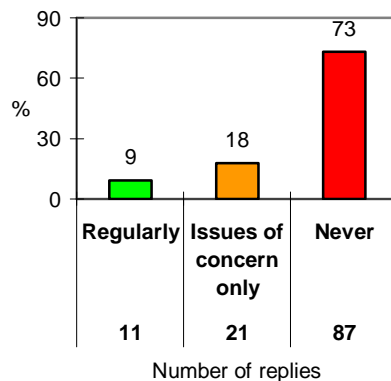


PARISH ADMINISTRATION

Q54 Do you know your parish councillors?



Q55 Attend parish council meetings



THE PRESENT SITUATION

Parish Councils were first created in 1894 to take on the duties formerly administered by Churchwardens and Overseers of the Poor.

As the first tier of local government, Parish Councils deal with local community matters and are non-political. Middleton Parish Council is one of 9000 in England, and has a number of statutory duties, and wide ranging powers at its disposal intended for the benefit of the local community.

Examples of the powers that a Parish Council may choose to exercise are:

- Power to provide and equip premises for clubs and other athletic, social or educational organisations.
- Power to make byelaws for public walks and pleasure grounds e.g. dogs and

dog fouling.

- Power to provide traffic signs and other notices

- Power to incur expenditure not otherwise authorised on anything, which in the council's opinion is in the interests of the area or part of it or all or some of the inhabitants

Parish Councils receive the majority of their funding from an annual charge called the Precept which is levied on local electors via the Council Tax.

Middleton normally has seven Councillors and a Clerk, who is responsible for the organisation of the council including dealing with correspondence, financial matters and preparation of meeting agendas and minute taking. The Clerk receives a salary based on national scale fees. Middleton Councillors do not receive payment for their duties. The council meets on the third Wednesday of every month (no meeting in the month of August)

Every meeting is open to the public, with time allocated for public participation.

The survey results indicate that there is a need for the Parish Council to improve it's communications with the community. Although the majority feel communication is "adequate" a significant number feel it is "poor". The great majority never attend Parish Council meetings.

A majority felt a website and a newsletter would be useful. In Summer 2004, a bi-monthly newsletter serving Middleton and Cottingham has been successfully launched. The Parish Council are gathering information on the creation and maintenance of a Parish Website.

POLICY

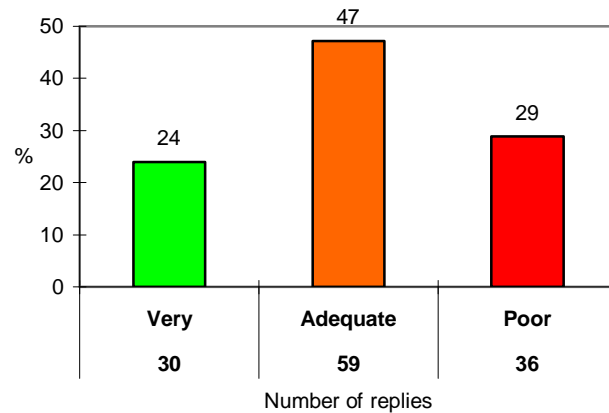
Policy PA1: The Parish seeks better communications between Middleton Parish Council and the local community. In addition to the traditional public notice board presently used, a newsletter and internet website should be set up and maintained.

The Parish Council will be expected to make every effort to keep the local community informed on matters affecting the Parish.

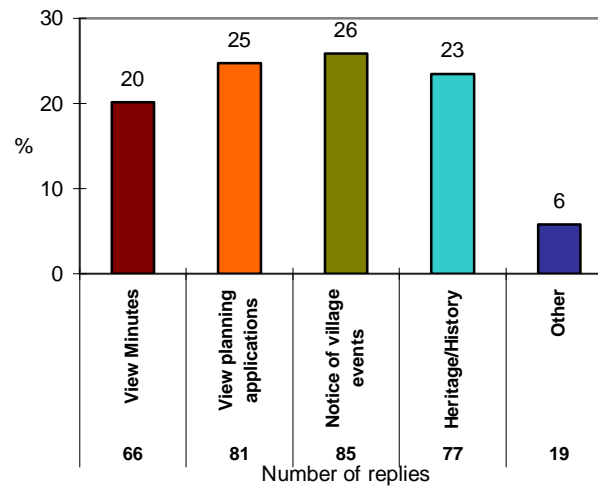


PARISH ADMINISTRATION

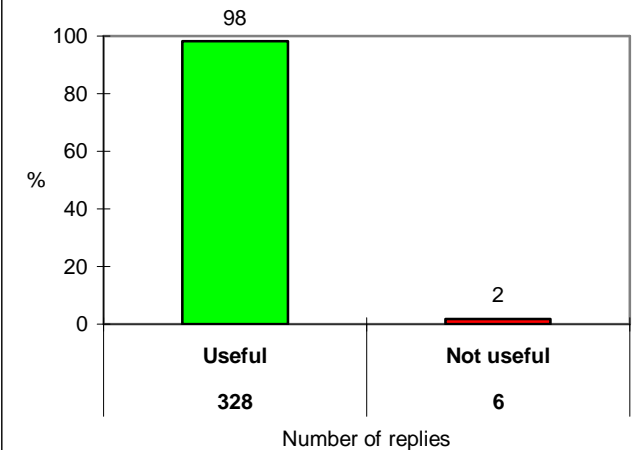
Q57 Effectiveness of parish council communicating its activities?



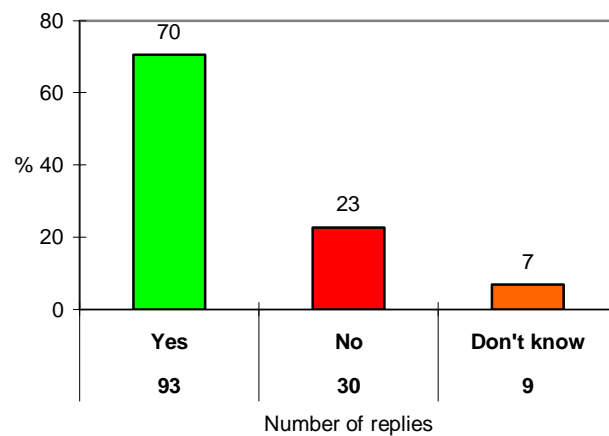
Q58 Things a Parish website useful for?



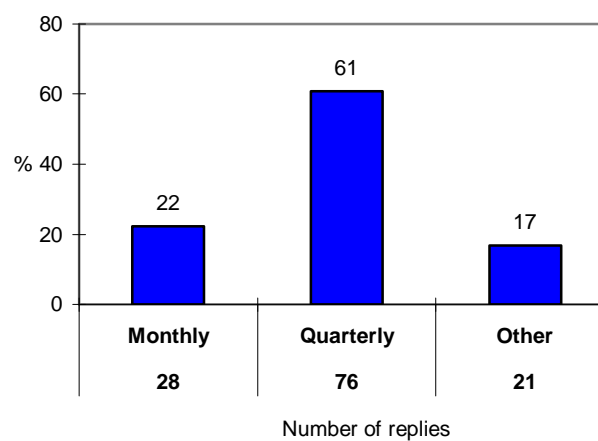
Website useful for listed uses or any other uses?



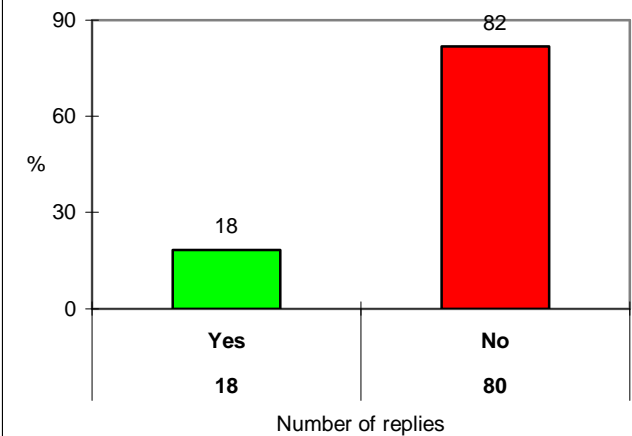
Q59 Parish Newsletter Useful?



Q60 Frequency of newsletter preferred?

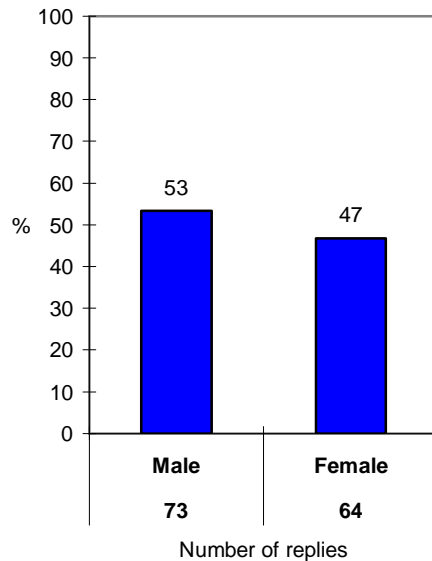


Q61 Willing to help with newsletter production?



ABOUT YOU— GENDER & AGE GROUP

Q63 Are you male or female?



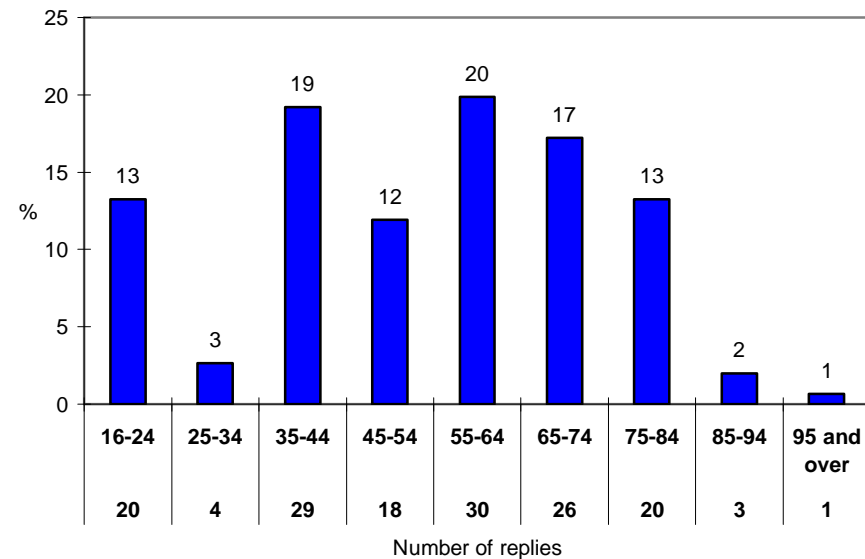
THE PRESENT SITUATION

Those responding to the survey are fairly evenly spread in their age groups, with significantly lower numbers of people in the 25-34, 85-94 and 95 and over age groups.

At the time of the survey (late 2003/ early 2004) approximately 30 parishioners lived in the Manor House nursing home who's age group may well fall within the 85 and older age groups. As only a small number of questionnaires were returned from these residents, the statistics will be affected in these age groups.

The male/female chart only indicates the gender of those responding to the questionnaire. The ratio shown however is fairly typical, indeed it is the exact reverse of that taken in the official 2001 Parish census i.e. 47% male/53% female.

Q64 Which age group are you?



Glover Court 2004

POLICY

Policy AG1: In all aspects of policy affecting the village of Middleton, the Parish will insist that the needs and wishes of everyone in the community are carefully considered, regardless of age or gender.



VERBATIM COMMENTS FROM QUESTIONNAIRE

Topic	Question	Comment
Environment	7	Village would benefit from communal green area with benches and perhaps a pond for residents to meet and enjoy, but not essential
	7	Car parking on the road is a nuisance especially on the bend at 18/20 Main St which makes overtaking the parked cars very risky as traffic coming from the direction of Ashley Rd often approaches at speed
	7	Within the last 10 years the "dale" has moved from being a delightful footpath between Middleton and Cottingham to a muddy, litter strewn obstacle course
	7	Q3- Walkers with dogs discriminated against, with regard to stiles. Recommend considering stiles such as in Devon/Dartmoor National Park. Q6- Weekly refuse collection totally unreliable
	7	Seasonal problem with fallen leaves on pavement outside Hunting Lodge and up the hill opposite the Red Lion
	7	Too much dog poo, my girls often stand in this, which is inconvenient and a hygiene hazard. They encounter a lot of horse poo also, which is sometimes delivered on the kerb right outside the house, equally disgusting, but seems to be more socially acceptable for some reason, poo bags for horse riders also please!
	7	I would welcome a bridleway linking the villages of Middleton and East Carlton to allow horse riders to pass through without having to ride on the busy Corby-Mkt Harborough Road. The only viable solution is a designated pathway through East Carlton Park.
	7	As a horse owner/rider I find there is a desperate need for a bridleway between Middleton and East Carlton as I take my life in my hands each time I ride along Corby to Harborough A427 Road. I did bring this matter up with the Corby Council about the possibility of creating a bridleway across East Carlton Park. This would be a short bridleway across the corner skirting the cricket club for access through to the village only. I would not wish to ride through the park. Corby Council thought it was more appropriate to contact the Parish Councils with a view to changing the existing footpath from Middleton to E.C. to a Bridleway, but this does not appear viable.
	7	It would be great to introduce recycling for plastics as well as glass, tins and paper + Christmas card collection in Jan for recycling.
	7	The welland pond on the Ashley road is particularly bad for fly tipping
	7	From School Hill Middleton. Is it possible to have a smaller refuse lorry so that it doesn't ruin all the grass verges, and is able to get down our lane if there is the <u>smallest</u> amount of frost on the ground? We can all get our cars out so a smaller lorry would have no problem. Is it possible for the grass cutters to leave the grass until the cowslips have finished flowering. Each year as soon as they start to grow, the strimmers get to work and cut all the wild flowers along our grass verges. Wild flowers are much prettier than lawns in the countryside!
	7	Dustbins have to be moved to top of Manor Court nr Bury Close, difficult for elderly. Waste tipped on Ashley Rd, also near River Welland on Ashley Rd.

VERBATIM COMMENTS FROM QUESTIONNAIRE

Topic	Question	Comment
Environment	7	The cul de sac off Ashley Road is poorly maintained. Weeds are a problem. Pavements are broken and dangerous. The grass verge opposite 17 Ashley Road is very poor at the moment. The skip was very useful and I would like to see its return.
	7	The new recycling bins (boxes) aren't very big and therefore not great deal is being recycled.
	7	More incentive needed (and help) to remove larger items of rubbish—this would contribute to less fly tipping.
	7	It is dreadful to see fly tipping in such a lovely area also rubbish thrown from cars/lorries. More should be done to clear it u p.
	7	As a dog owner and a parent I feel the horse excrement is a disgrace (please bear in mind I love horses)
	7	Are you going to collect cardboard and plastic in the future?
	7	The 'top road' around the village is a fly tipping hotspot. Waste/burnt out vehicles are occasionally left here 'too' long.
	7	There aren't any litter bins between the Post Box in Main Street, staying on that side of the road, till I turn into Darescroft on Ashley Road.
	7	No access due to kissing gates along Camsdale Walk to Cottingham & opposite Red Lion to East Carlton Park.
	7	Ruined by new houses. I will be leaving Middleton because of it.
	7	I feel that inconsiderate people have a lack of respect for the countryside, by dumping rubbish on public bridleways, not only that but it doesn't get cleaned up by anyone either.
	7	Bridleway on Ashley Rd is abused by people who don't live in the community and is poorly maintained. I.e. cleaned, secured and policed.
	7	Plastics recycling—even if they could be put in supermarket bags for collection
	7	Middleton has become a building 'hive of activity' with vehicles, mud, rubble etc cluttering up the main street—no green areas left and every space is being built on e.g. Middleton Garage site—3 houses crammed onto a very small area.
	7	Access to communal tip has to be made easy otherwise fly tipping is rife.
	7	<Waste collection> very keen to avoid School Hill at slightest hint of frost/ice on road. Often dumped waste on old A427 for several weeks before clearance.
		The monthly 'skip' was an extremely good waste management service which would be well received if re-instated.

VERBATIM COMMENTS FROM QUESTIONNAIRE

Topic	Question	Comment
Environment	7	Litter & Rubbish on farm track off Ashley Road to river
	7	I would like to see the skip reinstated on a monthly basis
	7	Bin Men leave empty bin yards away from gate.
Employment	10	I am employed by a company based in Warwickshire but work from home, only visiting head office occasionally.
	10	Although 'retired' I do some office work at home.
	10	Poor quality jobs and low skill level.
	10	There is now virtually no local employment in the village only the pub.
Health & Social Care	14	District Nurse poor
	14	Concerned at population & housing increase. Hospital struggling already (alerts) what about future provision for hospital.
	14	I have to travel to Desborough to a dentist because no other dentist locally will take on NHS patients.
	14	There needs to be a surgery in the village and prescriptions could be collected from the post office.
	14	More 'lifts' for elderly spouses when one partner is hospitalised.
	14	There are not enough NHS dentists in the local area
	14	In comparison with adjacent areas, Drs appts. Are easily arranged.
	14	Dentist in Corby retired no alternative available yet.
	14	I must travel to Desborough for dental care
	14	Fairly useless
	14	Would be nice to have a Drs Surgery and maybe a pharmacy attached.
	14	Main Healthcare used Doctor—Desborough. Hospital—Kettering. Dentist— Desborough.

VERBATIM COMMENTS FROM QUESTIONNAIRE

Topic	Question	Comment
Health and Social Care	14	I use dentistry and optical services from outside the area.
	14	We can't get a dentist locally.
	14	Since Lakeside surgery operates only a daily appointment service—it is very difficult to see your own doctor and frustrating phoning daily.
	14	It is difficult to get an appointment on a daily basis.
	14	Q11: Very difficult to register with a surgery. Resorted to calling Regional Health Authority to gain access. Q12: Even more difficult to gain access to NHS dentist. Word received via the grapevine that Corby dentist accepting new patients so acted swiftly. Note: He can accept new patients because methods resemble that of being processed by battery farmers.
	14	Lack of NHS dental surgeries locally
	14	We have no NHS dentists available in Corby. Husband has to travel to Kettering. I and son pay private to ensure we have local treatment.
	14	We have been on the patient list at Forest Gate Medical Centre (formally Elizabeth St) and have found their service excellent at all times getting appointments quickly.
Education	18	There is nowhere for the Childcare groups & Clubs to meet.
	18	Secondary—Lodge Park Little feedback to child or parents. Technology classes repeatedly cancelled.
	18	Need for youth organisations, e.g. Scouts, Guides
	18	Have filled in some of childcare& education questions due to only recently having left education system. Holiday groups and child activities in general always seemed to take place in Cottingham
	18	There is a lack of things for local teenagers to do in Middleton, this has led to vandalism of the school etc.
	18	As school governor, and with two grandchildren at Cottinham school, I think the school has improved enormously with the new head teacher, Mr Luke Whitney, going ahead with exiting plans for the future, and more children attending at the school.
	18	I think it is a very relaxed attitude to education but it could be worse
	18	Cottingham is lucky to have a positive, creative, forward thinking headmaster who will generate well balanced human beings, not just pupils doing well in a system.

VERBATIM COMMENTS FROM QUESTIONNAIRE

Topic	Question	Comment
Education	18	Bishop Stopford has provided our children with an excellent all round education.
Heritage	20	Not enough knowledge or how to access this. Keen to try and preserve the village 'feel' without too much landfill development th us increasing traffic problems and associated problems to this.
	20	Where can we find information?
	20	Are there any publications on this subject?
	20	New developments should be in keeping with the village—not like Tesco's
	20	Before further planning development is allowed– planners should consider the parking problem all along Main St. —it will soon be gridlocked & dangerous.
	20	Hope it doesn't increase in size.
	20	I am very concerned about the proposed fish farm locally which was refused some years ago & sincerely hope it will be refused again.
	20	A dedicated website highlighting the history of the village & key architecture could be of interest.
	20	It would appear that the property market has resulted in post office/shops being bought as houses. Middleton needs “ye olde” shop/ public house etc. for the benefit of community relations.
	20	New building should <u>not</u> be allowed to alter the traditional character of the village.
	20	New buildings are spoiling the traditional character & making it seem like a “dormitory” village for Leicester or London.
	20	I like things the way they are. Middleton is a lovely peaceful place to live.
	20	There isn't a lot due to the building of new properties in the village.
	20	What is 'Middleton Heritage'?
	20	The village has changed considerably in the last 10 years—the peace & tranquillity is the reason I moved to the village & it is a shame to see this spoilt with so much development, which has caused considerable noise/extra traffic/change in scenery. It would be a shame to see the village further changed for the worse.

VERBATIM COMMENTS FROM QUESTIONNAIRE

Topic	Question	Comment
Middleton Heritage	20	Don't know enough about it. Worth harnessing the intimate knowledge of the village residents while they are in a position to assist.
	20	Cottingham village sign is well maintained Middleton is poor by comparison.
	20	.Developments to be in keeping with village.
	20	There must be some local people who have knowledge & documentation of the village and it would be good to tap into these sources
Housing Needs	28	I do hope not too many houses are built as Middleton is such a lovely village and it would spoil the character of it.
	28	Ref Q26 in general they have been good for the village but selectively some have been significantly less good for the local visual environment.
	28	Designs of new housing is frequently unrelated to existing buildings—much more care is needed in planning.
	28	Development necessary and unavoidable. However, excessively compact infill to be avoided. Preserved villages die.
	28	The new large scale development and the in-fill developments have been good but the village is now large enough and there should be no further green field development.
	28	Too much building has already taken place on new build and set to get worse as it continues which makes this questionnaire a joke.
	28	“In filling” on sections of private land brings problems to many aspects of the village—heavy lorries, spillage & general inconvenience to residents, not forgetting child safety!
	28	The new housing development has caused a lot of noise— firstly with the building works & now with dogs barking/lawn mowers etc. The village has already increased dramatically in size & should not be further developed – keep Middleton peaceful—if we wanted noise/housing developments we would move to a town.
	28	No more large estates in village, if houses were built no large 5 bedroom houses out of keeping with the village, also no houses at the back of others given planning permission!
	28	Please refer to Q26 Too much infilling, giving little consideration for car parking, road suitability, views etc.
	28	The new developments have increased traffic in Middleton, which can lead to speeding and other road safety matters. This needs addressing urgently.
	28	Q26— more of a ‘not applicable’ as I myself haven’t lived in the village long enough to recognise benefit/detriment
	28	More houses for young couples needed to stop the exodus of people who cannot afford executive prices for homes.

VERBATIM COMMENTS FROM QUESTIONNAIRE

Topic	Question	Comment
Housing Needs	28	The new properties have not “integrated” so far —so numbers at village functions are still minimal.
	28	Some of the housing developments have been ‘squashed’ into the infill areas available—not enough thought of inevitable effects of traffic and increase social needs (schools/facilities for alternative transport)
	28	I have no objection to further small housing projects, provided that any development is ‘in keeping’ with other properties. Middleton is part of a conservation area, however Corby B.C. do not seem to recognise this.
	28	Above questions cannot have a single answer. I.e. a development with it’s own roads/garage is OK. Others that are infill with limited off road parking are not OK—result in excessive street parking, which results in very dangerous exit from some existing driveways.
	28	Concerned as to whether utility provision can cope.
	28	With so many houses proposed for surrounding area don’t see the need for development of village as infrastructure not adequate.
	28	I feel that a small village is being oversubscribed by houses. This ruining the village setting.
	28	Too many houses already.
	28	Middleton Roads/Lanes cannot cope with more housing. At the moment some properties have 3 cars/plus. They are left on footpaths and roads, causing congestion. Householders do not put their cars in garages anymore.
	28	We have recently moved from Cottingham to new estate in Middleton. I feel this development is tucked away in village making use of small parcel of land but has kept the open views available to existing householders.
	28	I would question some of the building permission granted on small plots of land with poor access.
	28	Access to any future developments should be away from Main Street due to parking problems and access problems for current owners joining Main St. between rows of parked cars.
	28	It’s a shame there is so much negativity to new development. We all live in houses that were a new development at one time.
	28	I like where I live but like anyone else here I don’t really like change.
	28	Provision for adequate parking very important if more housing built each household has more than one car.
	28	No more developments other than careful conversion of redundant buildings.
	28	New Buildings should be built in sympathy with materials used in established village i.e stone reclaimed brick etc Also sympathetic design

VERBATIM COMMENTS FROM QUESTIONNAIRE

Topic	Question	Comment
Crime & Anti-Social Behaviour	37	Fireworks late at night
	37	Fireworks
	37	The peace and tranquillity is being lost due to more cars, children playing football in our lane.
	37	Since the development of new housing estate increased noise of children shouting and dogs barking
	37	Barking dogs, children playing in the street, light pollution.
	37	Fireworks late at night
	37	Youths who hang around the school and up the bridleway near river.
	37	Lack of respect for the village generally by people from outside of area.
	37	Noise especially the loosing off of fireworks.
	37	Careless parking near Middleton Nursery i.e. Min Street
	37	Noisy traffic speeding down Ashley Road
	37	Speeding and poor road safety
	37	Noise
	37	Stolen Car crashing outside our house
	37	Fast and noisy traffic speeding down Ashley road
	37	People failing to clean up dog mess along Ashley Road
	37	Litter
	37	Noise—especially fireworks going off at all hours, days. Frightening our animals.
	37	Cans etc being stuffed into spring outflow pipe causing overflow/litter.

VERBATIM COMMENTS FROM QUESTIONNAIRE

Topic	Question	Comment
Crime & Anti-Social Behaviour	37	Problems related to Red Lion PH. Have experienced late night/early AM noise from taxis sounding horns, drunken people leaving, fights environmental probs due to noise from fan, music & over-excited kids using garden in summer (unchecked)
	37	Smoke into house and garden (bonfire and poorly designed low chimneys). Music (beat) from two houses away in summer.
	37	Late night noise—usually fireworks.
	37	Noise from Red Lion late at night
	37	Parking on bends adjacent to the Nursery
	37	There appears to be a detrimental effect from the Red Lion Pub in the last few years—with bottles etc. at the top of the footpath to East Carlton & also reports of late night drinking/drugs/fighting in the pub.
	37	Taxi hooting at Red Lion PH after 11PM
	37	Speeding Traffic, noise from Red Lion at night & drunken drivers from Red Lion & SpreadEagle.
Crime & Anti-Social Behaviour	37	Noise from taxis late evening early hours using horn for pick-ups outside Red Lion Pub. Noise from drunks/also involved assault early hours morning. Music/kids and fan noise to excess fro Red Lion Pub.
	38	Bonfires—now that housing is becoming denser the old habit of using bonfire is a big nuisance. We are regularly driven indoors/t ake washing off line/shut all windows due to this nuisance.
	38	Theft from a motor vehicle—no visit at all from police. Concerned at shortage of police, pressure of admin on them + control cen tre now at Northampton.
	38	Noise level during summer months from E Carlton PK loud music (Rave?) occasionally
	38	Cars now mounting the pavement to pass in both directions outside 20 Main Street. This will eventually lead to a serious accident & maybe a fatality.
	38	Late night taxis are a problem with noise control—honking of horns
	38	Two anti-social activities– 1. Dog mess immediately outside my house. 2. Sudden explosion of fireworks—not on Nov 5th but on other occasions—people should be given warning.

VERBATIM COMMENTS FROM QUESTIONNAIRE

Topic	Question	Comment
Traffic and Transport	44	Bus service is good
	44	Chicane in Main St Flashing warning in The Hill
	44	Ashley Road/The Hill is a dangerous area for speeding. (crash outside our house & cat run over —lucky it wasn't a child)
	44	Traffic calming is spreading like a virus throughout the country in general and Northamptonshire in particular and is having the effect of restricting the freedom of the law abiding majority whilst having no effect on the anti social behaviour of those who have no respect for others, indeed official figures show that no reduction in accident rate has been achieved.
	44	Flashing warnings good at entrance to village e.g. The Hill. Chicanes for through village traffic.
	44	We need a better/more regular bus service
	44	It is always a problem having to go to Leicester to pick up long distance "National" coaches. A pick up by Nat Express at Corby or Harborough would be useful.
	44	Traffic calming (if carried out using chicane/humps etc.) increases vehicle noise with excessive gear changes, so would need careful consideration.
	44	Already share transport to work
	44	Main Street very hazardous—when parking at peak times causes problems to overtake. Locals may be aware but strangers to the village just speed through.
	44	Multiple street parking makes visibility for exiting some driveways a lottery on some occasions. I.e. inching totally blind out into a street and waiting for a hoot or screech of tyres.
	44	Drivers of cars, vans & lorries often drive too fast through Middleton with total disregard for others.
	44	Sometimes when my carers take me out in my wheelchair, the cars scare me as they go too fast through the village.
	44	I have concerns regarding the proposed village hall site and the problems that will develop from cars parking along Main St.
	44	Problems encountered with parking of cars outside children's nursery on main St. Also parking on bend outside houses on opposite side of Main St.

VERBATIM COMMENTS FROM QUESTIONNAIRE

Topic	Question	Comment
Traffic & Transport	44	Parking outside Middleton home makes it difficult when turning on to Main Street from Glover Court especially when directly opposite road into Glover Court
	44	Sadly cannot consider car sharing due to unpredictable nature of work+ uncertain start/finish times, would have been interested otherwise.
	44	I feel 'humps' only affect those drivers who abide by the speed limit & don't require them.
	44	Main Street Overused
	44	Cars parked along Main Street create dangerous conditions for traffic
	44	Car parking along Main St a real problem —certain times of the day there can be an excess of 30 cars parked from Cannam House to Manor House
	44	Insufficient help from local bodies—CBC NCC
	44	Bad and dangerous congestion of parked cars on Main Street (Day Nursery) not forgetting the very dangerous tractor parked on the bend on Main Street and Ashley Rd.
	44	I am vehemently opposed to traffic calming in the form of speed humps. Not only do they make driving an unpleasant and uncomfortable experience but the pollution which they trigger is far more detrimental to the environment and to the community than traffic which is allowed normal progress.
Sport and Leisure	48	Walking (similar to ramblers)
	48	Tennis Club would be good
	48	A running track?
	48	Football or tennis if there were spaces and facilities available
	48	Unlikely to be interested personally in listed activities, nevertheless feel such provision is necessary to maintain and foster the community spirit in this village and encourage partnership with Cottingham (or is it sacrilege to suggest this?)
	48	Yoga
	48	Badminton
	48	Rosemary Conley classes, Parent & Toddler groups for village hall

VERBATIM COMMENTS FROM QUESTIONNAIRE

Topic	Question	Comment
Sport and Leisure	48	Although in general would not be interested myself in activities in the village hall but they should be provided for people who would use them
	48	Provision of tennis court on land opposite Manor House
	48	New village hall will greatly benefit the community. All we need then is a good well managed local pub for local people not Corb y overspill.
	48	The village could do with a tennis court!
	48	Tennis, if a tennis court was built near new village hall
	48	Tennis
	48	A sports hall would be very beneficial and lucrative for the village as indoor halls for 5 -a-side football leagues are fully booked all year round at every sports facility locally. NB They could also be used for organising sporting clubs to keep children occupied and off the streets in the evenings.
	48	We could have a walking group. Musical appreciation club.
Places of Worship	48	To be made available for children as well as adults.
	52	Whilst I feel the church is for “everyone” I have been disappointed that the ‘traditional’ service has gone and that the majorit y of services are geared toward children. I miss the traditional service and words/music I have been familiar with and which was part of me.
	52	Access is difficult for the elderly
	52	The Church needs far greater support from residents. Earlier generations gave far greater contributions in both attendance and f i-nance. Unless there is a far greater awareness, the Church will become redundant and probably fall down.
	52	Don’t have enough involvement to comment on Parish needs
	52	Our Vicar, Revd. Miles Falla, is responsible for Gretton, Rockingham, Cottingham/Middleton and East Carlton. He is assisted by a curate, Reader and Pastoral Assistant—a growing team of people are communicating with parishioners.
	52	Better parking
	52	Not easy to park
	52	Local vicar to call on new residents!

VERBATIM COMMENTS FROM QUESTIONNAIRE

Topic	Question	Comment
Places of Worship	52	A more “user friendly” + locally involved vicar would benefit the community!
	52	Knowing persons who do attend church, am aware that the church seems heavily weighted towards kids etc. who are allowed to run unchecked during services thus removing the spiritual feel of the place. Good to encourage kids, but more control required. Switch to modern rather than traditional service has not gone down well with all.
	52	I wish I knew!
	52	Some help from Corby to tidy the graveyard would be useful—they look after the cemetery in Corby very well!
	52	Rota system of Parish Priest leaves many Sundays without a good service—relationships not built up between residents and Church.
	52	Lack of information re time of Communion and lack of information generally, needs to have more communications with the community.
Places of Worship	53	There is little opportunity for me personally to ‘focus’ spiritually with children being disruptive and causing noise through prayer. I’m all for children attending a service but please allow others to have their time too to enjoy, as I used to. Time to reflect. I used to attend every week but now despite attending when I feel I want to ‘try again’ always find that the disruption by children gets in the way. Let them have their time and adults theirs.
	53	Present links with parishioners include a monthly newsletter “Towers & Spires” a very well attended Family Service (parents/children/babies) every month, regular visits to the sick etc. Cottingham C of E School also has good links with the church.
	53	Previous vicars have been more open and welcoming than the present incumbent. May be down to personality—may be down to pressure of tending several parishes + the problems that brings with depersonalisation etc.
Parish Administration	62	A parish website would be excellent
	62	I look forward to some action around the road safety points raised at the “your village” open day
	62	Like to say thank-you for the efforts they are making on behalf of Middleton.
	62	Website “other” - space for comment both in praise and otherwise. eg “whoever owns a “X” dog which messed in my drive please control it”!
	62	From what I see there seems no point in having a parish council.
	62	Out of sight/ out of mind!

VERBATIM COMMENTS FROM QUESTIONNAIRE

ACTION PLAN

Policy	Action	Responsibility	Timescale/Priority
Environment: E1	A voluntary "local Environment Watchdog" will be sought and appointed by MPC. The Watchdog's role will be to observe and gather observations from others, and report to MPC.	MPC	Immediate/Medium
Environment: E2	MPC to undertake survey of access trouble spots. Full report from MPC to relevant authorities.	MPC, CBC, NCC	Immediate/Ongoing/High
Environment: E3	Watchdog to carry out initial survey, report to MPC, then provide regular observations.	MPC,NCC	Immediate/Ongoing/Medium
Environment: E4	MPC to seek meeting with CBC to discuss problem and seek improved service levels.	MPC	Immediate/Ongoing/Medium
Environment: E5	MPC to erect new bylaw warning signs. Flyer to be circulated explaining that under the policy, complaints about individual dog owners received by MPC will trigger a letter to the offender from MPC	MPC	Immediate/Ongoing/High
Employment: EM1	New village hall design to include as many facilities within the available budget to enable training and instruction in subjects that may improve opportunities for employment locally.	MPC, Village Hall Trust.	Immediate/Ongoing/Medium
Health & Social Care: HC1	Investigate whether it is feasible to use the new village hall for certain healthcare services.	MPC, Village Hall Trust.	Late 2005/High
Education: ED1	No further action planned at present.		
Heritage H1:	A voluntary group will be formed and invited to compile a list of "Heritage" sites and objects in the parish, for identification and future protection where possible.	MPC	Immediate/Ongoing/Low
Housing: HO1	County and Borough authorities to be made aware of and to acknowledge the Parish Plan, and their assurance sought that future planning and Local Plan decisions will reflect the wishes of the majority of people of Middleton.	MPC	Immediate/Ongoing/High
Crime & Anti-Social behaviour: CD1	Local police authority to be contacted and a meeting arranged to discuss the dissatisfaction felt by the community. Police officer allocated to Middleton will be invited to attend Parish Council meetings whenever possible.	MPC	Immediate/High
Crime & Anti-Social behaviour: CD2	Anyone in the parish who has a complaint about local anti-social behaviour problems will be invited to give details by letter or in person to MPC. The subject to be on every MPC meeting agenda, during public participation period.	MPC	Immediate/Ongoing/High

ACTION PLAN

Policy	Action	Responsibility	Timescale/Priority
Traffic & Transport : T1	Renewed efforts will be taken to lobby County and Borough Authorities to introduce traffic calming in all affected areas in the village.	MPC	Immediate/High
Traffic & Transport : T2	A car-share scheme organiser will be sought and invited promote it via the local newsletter, village and notice-board.	MPC	Immediate/Low
Sport and Leisure: SL1	A clear policy will be sought regarding the playing field and changing room facilities, the authorities responsible to meet and construct a clear strategy.	MPC	Immediate/medium
Sport and Leisure: SL2	Progress with new village hall to be explained on regular basis via newsletter and MPC minutes.	MPC, Village Hall Trust	Immediate/Ongoing/Medium
Places of Worship: W1	No further action planned at present.		
Parish Administration: PA1	Parish website to be created. The present newsletter to be provided with information on MPC matters on a monthly basis.	MPC	Immediate/Ongoing/Medium
Age and Gender: AG1	No further action planned at present.		

INTRODUCTION

CONTENTS

<i>Environment</i>	2,3,4
<i>Employment</i>	5
<i>Health and Social Care</i>	6,7
<i>Education</i>	8,9
<i>Heritage</i>	10
<i>Housing Needs</i>	11-13
<i>Crime</i>	14-17
<i>Traffic & Transport</i>	18,19
<i>Sport & Leisure</i>	20,21
<i>Places of Worship</i>	22
<i>Parish Administration</i>	23,24
<i>Age and Gender</i>	25
<i>Verbatim Comments</i>	26-39
<i>Action Plan</i>	40,41



Children's Model of Middleton July 2003

What is the Middleton Parish Plan?

Parish Plans were announced in the Government's "Rural White Paper" in 2000. Through the Countryside Agency's Vital Villages initiative, parishes in rural areas were given priority and grants made available to cover the costs of preparation and production.

The purpose of the plan is to find out what the people of Middleton think about the issues affecting life in the village, find out if anything needs changing, create policy and take appropriate action where needed. This is a five year plan.

A substantial amount of feedback from the village "Future Needs" day in July 2003 helped to focus on the issues that concerned the majority of people. The Parish Plan Steering Committee was able to produce a questionnaire based on these issues, and therefore tailored to the needs and aspirations of Middleton.

The questionnaires were distributed by hand to the 301 people listed on the Corby Borough Council Register of Electors (CY Corby Rural West No.3). Glover Court was not included on the Register at the time, being still under construction, a questionnaire was offered to every occupant then present.

53% of questionnaires were returned, which helped to produce data of reasonable accuracy, although this is not a scientifically accurate survey, which would be beyond the resources and budget available.

Policy on how to deal with each of the issues contained in the plan flows from the feedback from the people of Middleton, as expressed at the open day, and the questionnaire. There are some issues that do not have a clear majority of views, and these need further discussion before policy is decided. In any event, the plan is not set in stone – a small community has the advan-

tage of being able to adapt and modify its policies if circumstances require it. The plan exists only to reflect the wishes of the people of Middleton, now and in future years.

Who has produced the plan?

Although initiated by Middleton Parish Council in early 2003, many people in the village have contributed substantial amounts of voluntary time and effort to the project.

The vital contributors of course are those people who aired their views, expressed opinions and made suggestions on the issues affecting the village. Without this involvement in our community, there could be no plan.

What happens now?

Middleton Parish Plan contains a number of policies that the community want implemented or continued. The Parish Plan and its associated Action Plan, represents an agreement between the community and the Parish Council as to how we would like our parish to develop now and in the future.

Like the Parish Plan itself, the Action Plan can be subject to review and revision. Priorities can change, and of course some objectives may not be met. The Parish Plan is not a guarantee, as many facets of local life are affected by policy decisions at Central, Regional, County and Borough levels. These authorities must, however, take Parish Plans into account when strategic, planning and other issues affecting the local community are being decided.

Will the plan have any real effect on our community?

If all or even some of the objectives in the plan are

achieved then clearly the village will be a better place to live. It is necessary to prioritise the Action Plan because some issues require more urgent action. High priority may not guarantee rapid action however, road safety in the village is an example. To bring about reductions in traffic speed through the village requires considerably more resources and cooperation by other authorities than say, tackling poor grass cutting.

Because the rural scene is changing, and priorities can shift, the Parish Plan needs to be dynamic and flexible. Policies and their associated plan of action need to be reviewed on a regular basis. The ongoing success of the project can only be assured if everyone in our community is involved.

Acknowledgments and Thanks

The people of Middleton for their participation in the open day and survey and the loan of historical photographs, maps and artefacts.

The Parish Plan Steering Committee : Kay Dickens, Tony Freeman, Charles Freestone, Maria Harvey, Mike Loseby, Dryden Phillipson (Chair).

Data Analysis : Dorothy Anderson, Derek Robertson, Gordon Watson.

The Head, Teachers and especially the children of Cottingham Primary school for their village model and fine photographs.

Jane Smith www.cottinghamhistory.co.uk.

The Countryside Agency.

Northamptonshire Action With Communities in Rural England (NACRE).

Middleton Parish Council Chaired consecutively by Simon Medwell and Keith Allsop